



STANDARD SPECIFICATION of e-pay WEB SERVICE

Prepared By: Ooi Mun Nee
Version: 3.1
Issue Date: 09/07/2013



Document Control

Version	Prepared By	Comments	Date
1.0	Ooi Mun Nee	First Draft	15/11/2007
1.1	Thin Siew Khim	Amend	15/11/2007
1.2	Thin Siew Khim	-Replaced topupReference with productCode and MSISDN	19/11/2007
1.3	Ooi Mun Nee	-Set transTraceId as option. -Added productCode and retTransRef for response message. -Amend the Response Code. -Amend the WSDL.	14/12/2007
1.4	Michelle Lim	-Amend the Response Code. -Amend the transDateTime. -Added List of Products. -Added List of Operator ID.	13/02/2008
1.5	Michelle Lim	-Amend Products list.	17/03/2008
1.6	Michelle Lim	-Amend pin, pinExpiryDate, responseMsg, transRef to Optional. -Amend Products list	23/09/2008
1.7	Ooi Mun Nee	-Amend function doOnlinePin to onlinePIN -Amend function doOnlinePinRev to onlinePINReversal -Amend function doEtopup to etopup -Amend function doEtopupRev to etopupReversal -Amend productCode length to 30 -Amend List of Product -Amend WSDL	17/11/2008
1.8	Ooi Mun Nee	-Amend WSDL	06/12/2008
1.9	Ooi Mun Nee	-Added Testing Settings Section -Amend the Response Code	14/08/2009
2.0	Ooi Mun Nee	-Added custom fields for all functions -Amend Reconciliation File: added custom fields and Last Ret Trans field, change MSISDN field to Optional -Added Reconciliation Return File section -Amend Response Code -Amend List of Product -Amend WSDL	26/11/2009



STANDARD SPECIFICATION of e-pay WEB SERVICE

2.1	Michelle Lim	-Amend List of Product	15/04/2010
2.2	Michelle Lim	-Amend List of Product	27/04/2010
2.3	Michelle Lim	-Amend List of Product	18/05/2010
2.4	Michelle Lim	-Amend Testing Certificate	26/05/2010
2.5	Ooi Mun Nee	-Adding sample message	10/06/2010
2.6	Ooi Mun Nee	-Amend recon file/recon return file naming description -Added new notes for List of Product	29/07/2010
2.6.1	Michelle Lim	-Amend WSDL	09/12/2010
2.6.2	Michelle Lim	-Amend sample message	21/12/2010
2.6.3	Michelle Lim	-Amend List of Product	06/06/2011
2.6.4	Ooi Mun Nee	-Amend List of Product -Amend WSDL	13/06/2011
2.6.5	Michelle Lim	-Amend List of Product	09/08/2011
2.6.6	Michelle Lim	-Amend List of Product	14/09/2011
2.6.7	Michelle Lim	-Amend List of Product	12/10/2011
2.6.8	Michelle Lim	-Amend List of Product	26/07/2012
2.6.9	Ooi Mun Nee	-Modified customFieldn length to 1000 -Amend recon file: changed CustomFieldn length to 1000 and added new TransType "PMT" -Amend Response Code List -Amend Testing Product List	25/01/2013
3.0	Alicia Ooi Mun Nee	- Add note under onlinePINResponse - Add note under etopupRequest - Add note under etopupResponse - Add note under etopupReversalResponse - Add onlinePINVoidRequest, etopupVoidRequest, paymentRequest, paymentReversalRequest, paymentVoidRequest, uploadRequest, deviceInitReques, deviceLoginRequest, deviceUploadRequest, networkCheckRequest - Remove Testing product list - Add macing field - Amend WSDL - Amend Response Code List	20/06/2013
3.1	Ooi Mun Nee	- Change TransDateTime format to yyyyMMssHHmmSS	09/07/2013



Table of Contents

1	Introduction	7
2	Web Services	8
2.1	PIN/E-Topup is a service that provides prepaid PIN or PINless topup reload requested by retailer	8
2.2	PIN Reversal/E-Topup Reversal is a service to reverse a PIN/E-Topup request. Some scenarios will cause to do reversal is connection lost or timeout.	8
2.3	PIN Void/E-Topup Void is a service to void a PIN/E-Topup request.	8
2.4	Payment is a service that provides payment services to retailer.....	8
2.5	Payment Reversal is a service to reverse a payment request. Some scenarios will cause to do reversal is connection lost or timeout.....	8
2.6	Payment Void is a service to void a payment request.	9
2.7	Upload is a service to upload related data of other services.....	9
2.8	Device Initialize is a service to initialize device.	9
2.9	Device Login is a service to login to the device.....	9
2.10	Device Update Information is a service to update host the device information.....	9
2.11	Network Check is a service to check the availability of the web service.....	9
3	Message Flow	10
3.1	onlinePIN.....	10
3.2	etopup (Pinless topup)	10
3.3	etopup (Touch 'n go topup)	11
3.4	onlinePINReversal	11
3.5	etopupReversal (PINLESS).....	12
3.6	etopupReversal (Touch 'n go topup).....	12
3.7	onlinePINVoid.....	13
3.8	etopupVoid (PINLESS)	13
3.9	etopupVoid (Touch 'n go topup)	14
3.10	Payment	14
3.11	Payment (Touch 'n go).....	15
3.12	PaymentReversal.....	15
3.13	PaymentReversal (Touch 'n Go)	16
3.14	PaymentVoid	16
3.15	PaymentVoid (Touch 'n Go)	17
3.16	Upload	17
3.17	Device Initialize.....	18



3.18	Device Login	18
3.19	Device Update Info	19
3.20	Network Check	19
4	Online PIN Request (onlinePINRequest).....	20
4.1	onlinePINRequest Description.....	20
4.2	onlinePINResponse Description	21
5	E-Topup Request (etopupRequest).....	22
5.1	etopupRequest Description	22
5.2	etopupResponse Description	23
6	Online PIN Reversal Request (onlinePINReversalRequest)	24
6.1	onlinePINReversalRequest Description	24
6.2	onlinePINReversalResponse Description	26
7	E-Topup Reversal Request (etopupReversalRequest)	27
7.1	etopupReversalRequest Description	27
7.2	etopupReversalResponse Description.....	29
8	Online PIN Void Request (onlinePINVoidRequest).....	30
8.1	onlinePINVoidRequest Description.....	30
8.2	onlinePINVoidResponse Description	32
9	E-Topup Void Request (etopupVoidRequest).....	33
9.1	etopupVoidRequest Description	33
9.2	etopupVoidResponse Description	35
10	Payment Request (paymentRequest).....	36
10.1	paymentRequest Description	36
10.2	paymentResponse Description.....	38
11	Payment Reversal Request (paymentReversalRequest)	39
11.1	paymentReversalRequest Description.....	39
11.2	paymentReversalResponse Description	41
12	Payment Void Request (paymentVoidRequest).....	42
12.1	paymentVoidRequest Description	42
12.2	paymentVoidResponse Description.....	44
13	Upload Request (uploadRequest)	45
13.1	uploadRequest Description	45
1.1.1	uploadResponse Description.....	47
14	Device Initialize Request (deviceInitRequest)	48



14.1	deviceInitRequest Description	48
14.2	deviceInitResponse Description	49
15	Device Login Request (deviceLoginRequest)	49
15.1	deviceLoginRequest Description	50
15.2	deviceLoginResponse Description	51
16	Device Update Information Request (deviceUpdateRequest)	52
16.1	deviceUpdateRequest Description	52
16.2	deviceUpdateResponse Description	53
17	Network Check Request (networkCheckRequest)	54
17.1	networkCheckRequest Description	54
17.2	networkCheckResponse Description	56
18	Reconciliation	57
18.1	Reconciliation File	57
18.2	Reconciliation File Format	57
19	Response Code	60
20	List of Operator ID	62
21	WSDL for e-pay Web Service	63
22	Sample Message	82
23	Testing Settings for e-pay Web Service	87



1 Introduction

e-pay Web Service is a value added services which enable retailer to request PIN or perform topup by hitting e-pay web server.

Due to the characteristic of this information which is real-time and should have a rapid response, therefore the system for supporting this service and should have a standard specification to ensure the performance of this service.



STANDARD SPECIFICATION

2 Web Services

There are 11 kinds of web services provided by e-pay, as follows:

2.1 PIN/E-Topup is a service that provides prepaid PIN or PINless topup reload requested by retailer.

PIN Based

- Product type is PIN.
- For PIN transaction request, e-pay will return back a serial number and PIN.
- Customer has to perform top up manually to their account using the PIN.
- Example: Digi 10, Hotlink 60, iTalk Mobile, etc.

E-Topup/ PINless

- Product type is ETU.
- For E-Topup transaction request, it will direct top up the amount to customer's account according MSISDN (mobile number).
- Customer does not need to perform top up manually.
- Example: Celcom Airtime 30, etc.
- For touch 'n go transaction request, With the use of the Touch n' go certified contactless reader the amount will be directly topup to the Customer Touch n' go card.

2.2 PIN Reversal/E-Topup Reversal is a service to reverse a PIN/E-Topup request. Some scenarios will cause to do reversal is connection lost or timeout.

2.3 PIN Void/E-Topup Void is a service to void a PIN/E-Topup request.

2.4 Payment is a service that provides payment services to retailer.

- Product type is PMT
- -For touch 'n go Payment request, with the use of the Touch n' go certified contactless reader the Customer can use touch 'n Go card to make payment.

2.5 Payment Reversal is a service to reverse a payment request. Some scenarios will cause to do reversal is connection lost or timeout.

- Product type is PMT
- For touch 'n go Payment request, with the use of the Touch n' go certified contactless reader the Customer can cancel the touch 'n Go card payment.



2.6 Payment Void is a service to void a payment request.

- Product type is PMT
- For touch 'n go Payment request, with the use of the Touch n' go certified contactless reader the Customer can void the touch 'n Go card payment.

2.7 Upload is a service to upload related data of other services.

- Payment type ETU or PMT
- For touch 'n Go transaction addition data required to upload to the host. Please refer to message spec for detail.

2.8 Device Initialize is a service to initialize device.

- For touch 'n Go transactions it will be refer to reader initialize.

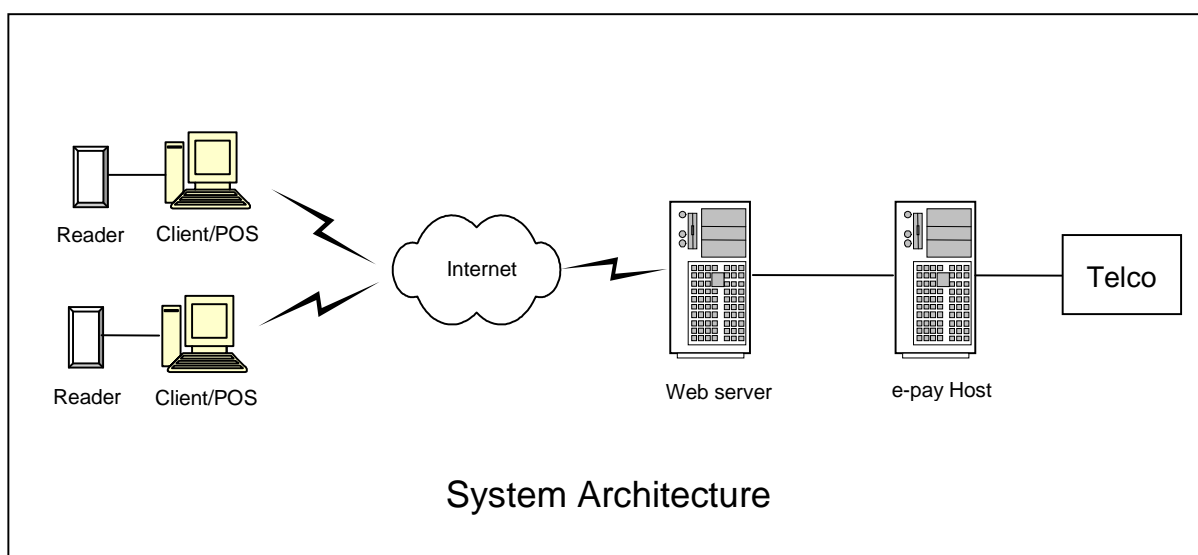
2.9 Device Login is a service to login to the device.

- For touch 'n Go transactions it will be refer to reader login.

2.10 Device Update Information is a service to update host the device information.

- For touch 'n Go transaction it will be refer to update reader information

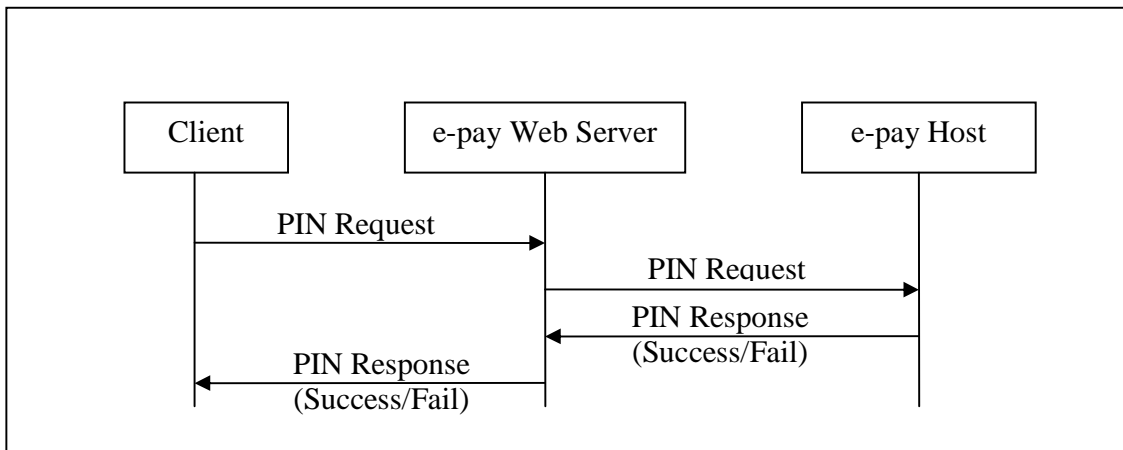
2.11 Network Check is a service to check the availability of the web service.



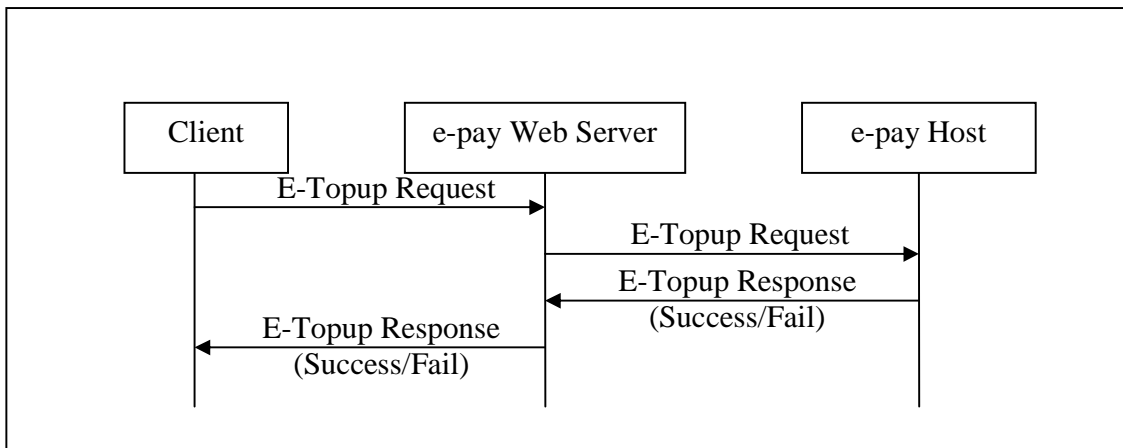


3 Message Flow

3.1 onlinePIN

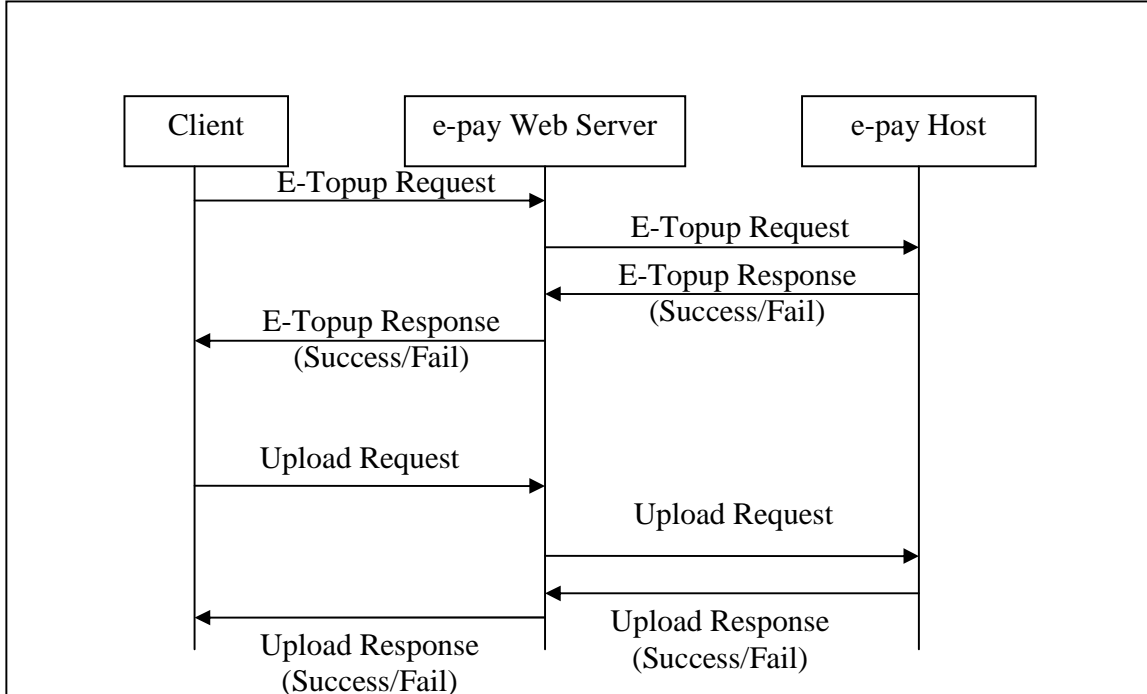


3.2 etopup (Pinless topup)

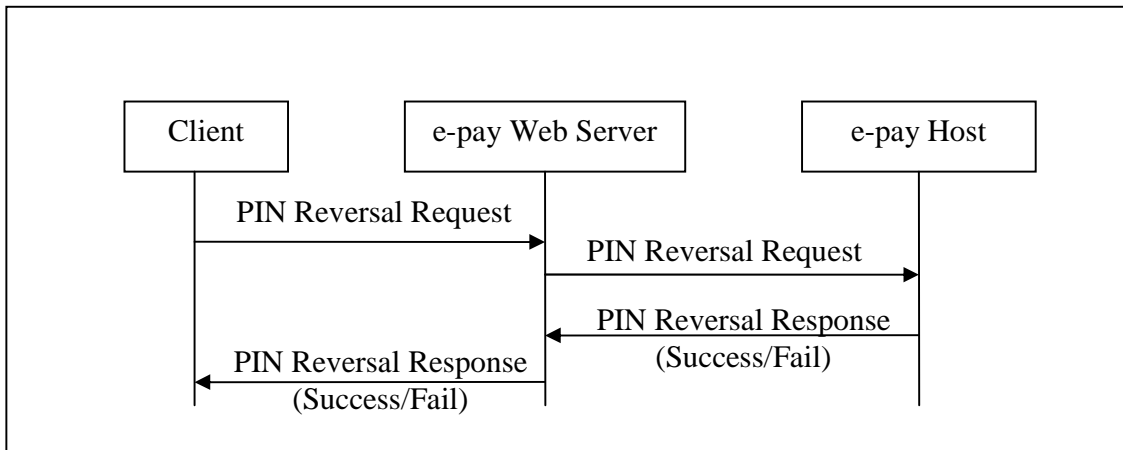




3.3 etopup (Touch 'n go topup)

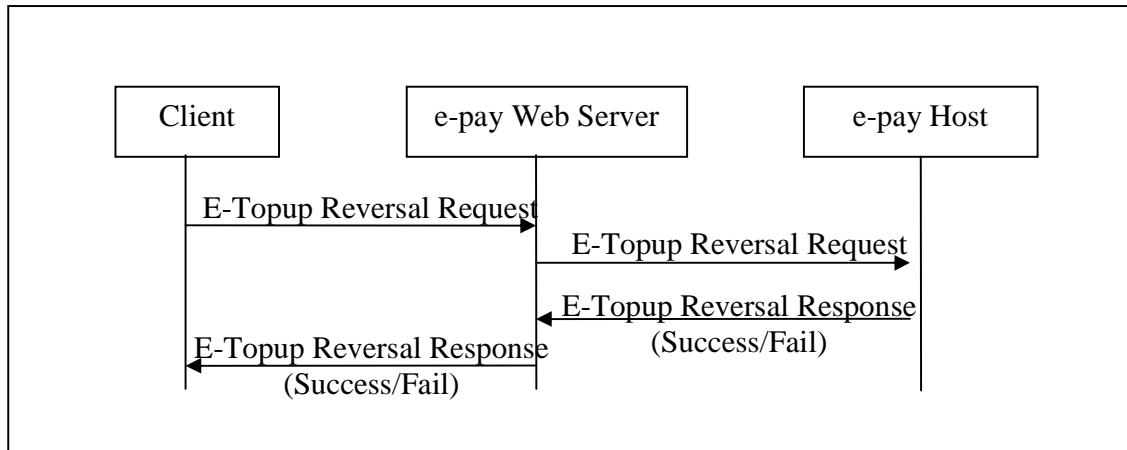


3.4 onlinePINReversal

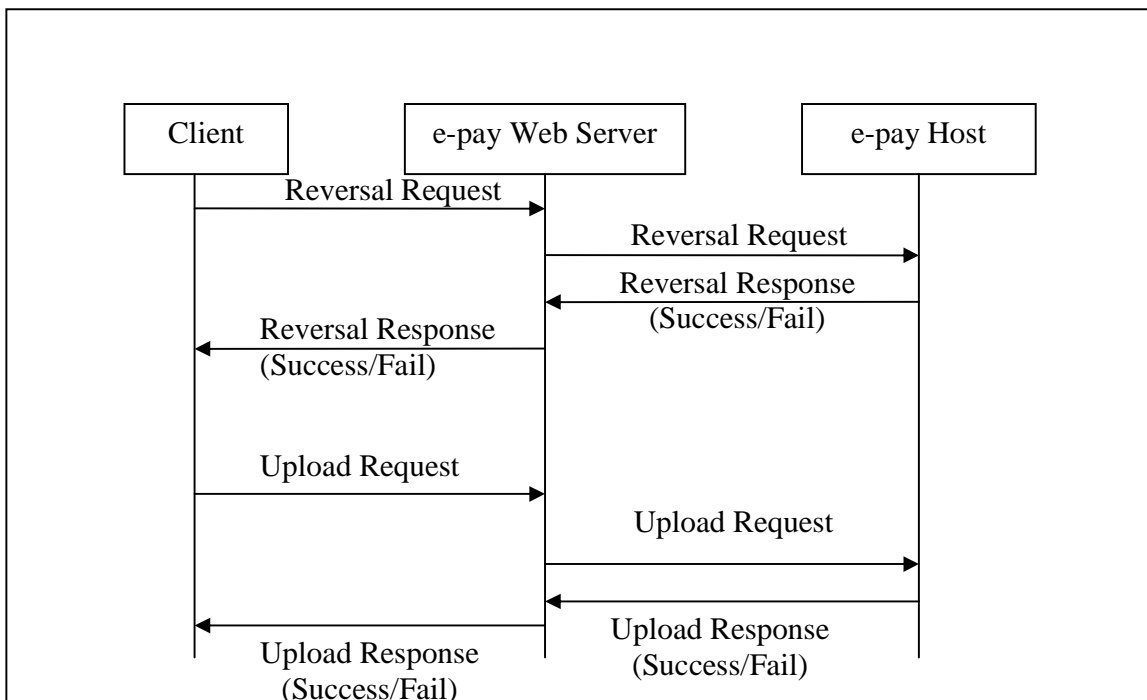




3.5 etopupReversal (PINLESS)

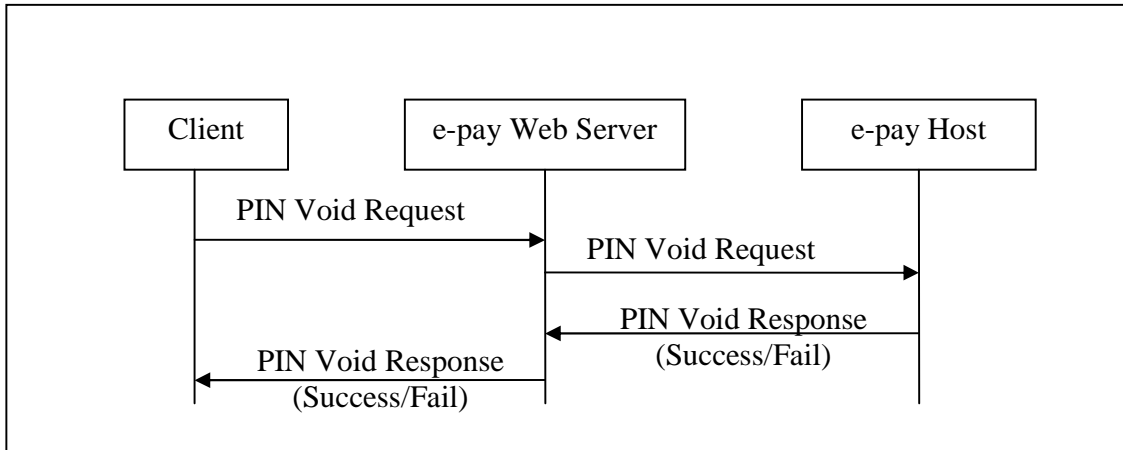


3.6 etopupReversal (Touch 'n go topup)

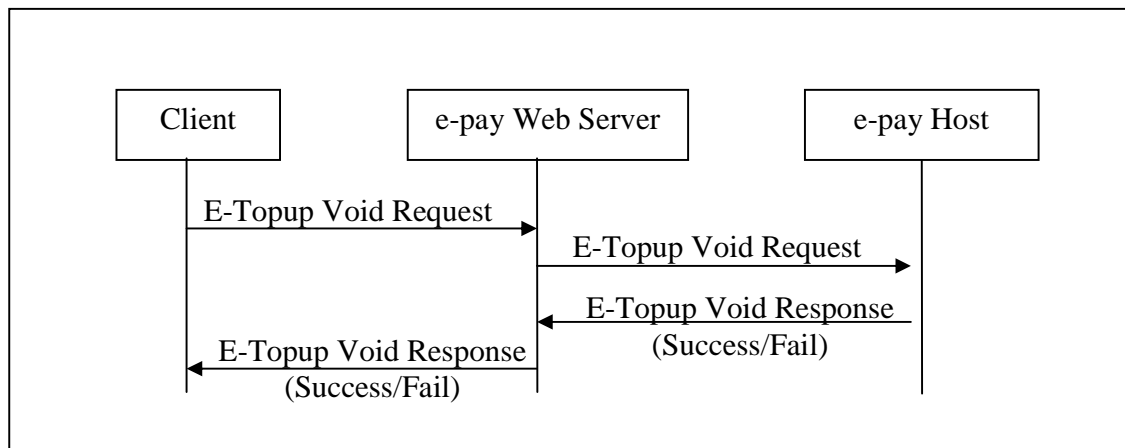




3.7 onlinePINVoid

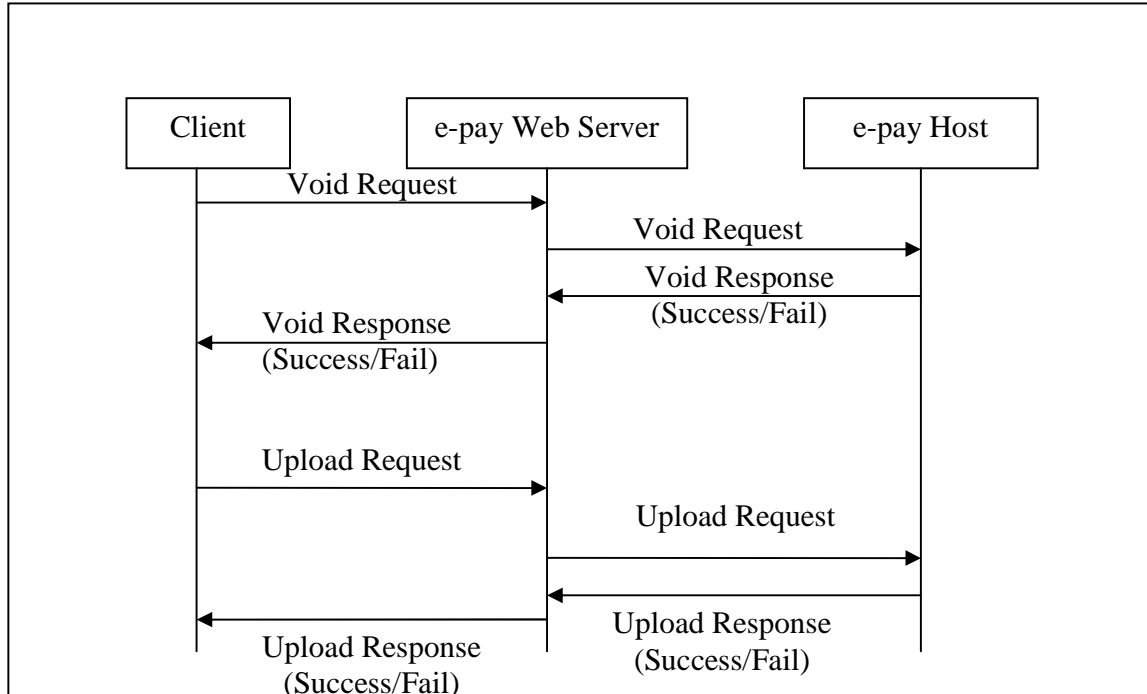


3.8 etopupVoid (PINLESS)

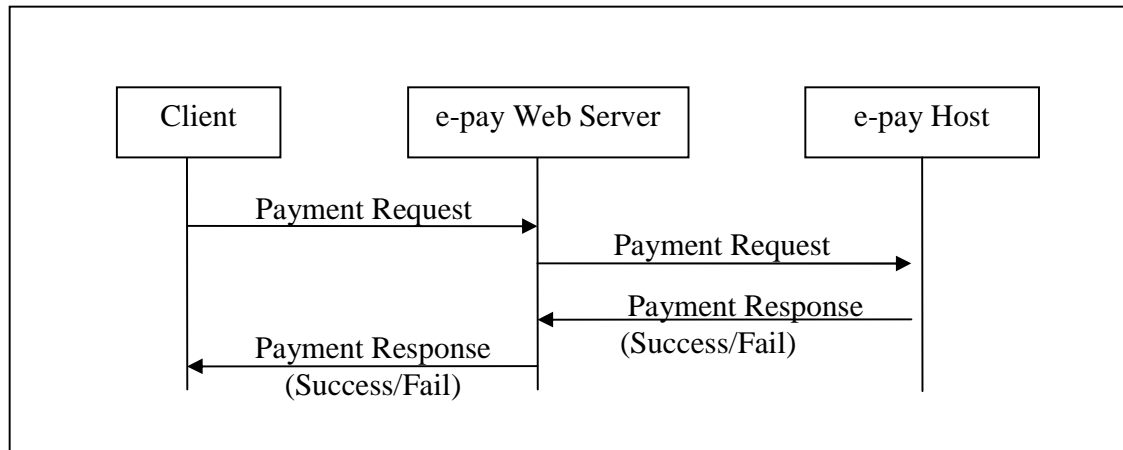




3.9 etopupVoid (Touch 'n go topup)

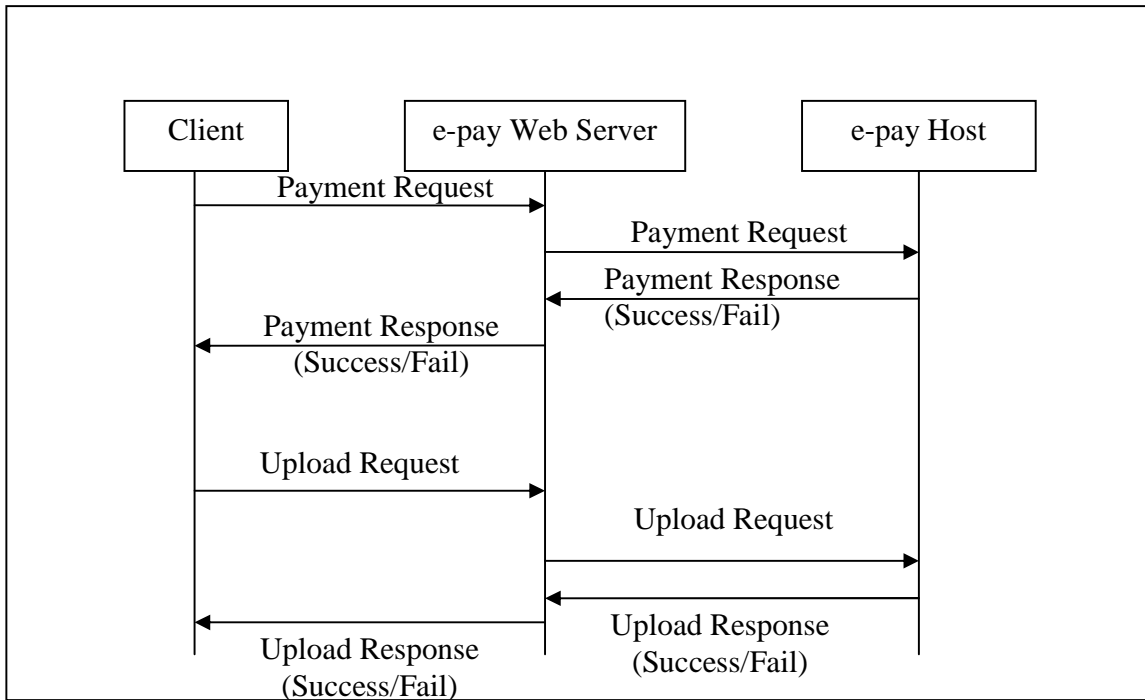


3.10 Payment

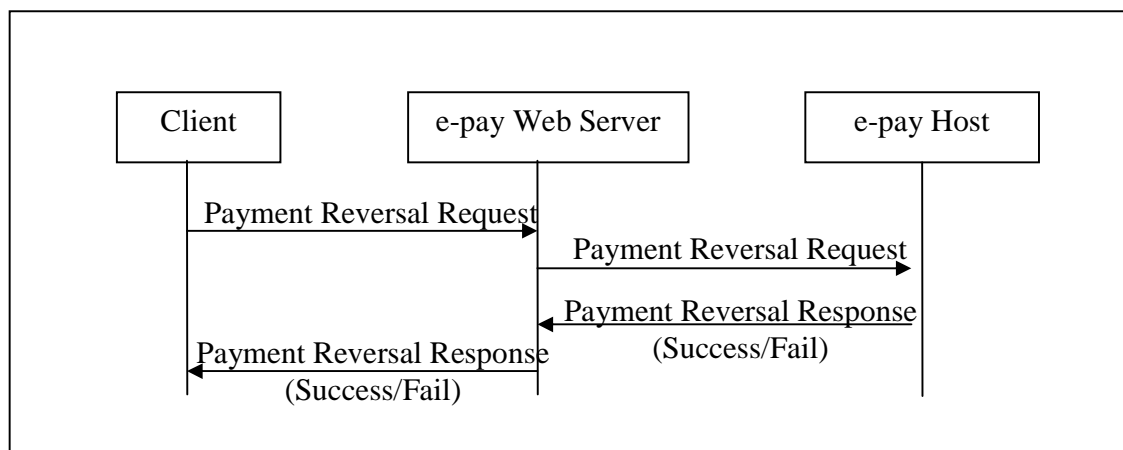




3.11 Payment (Touch 'n go)

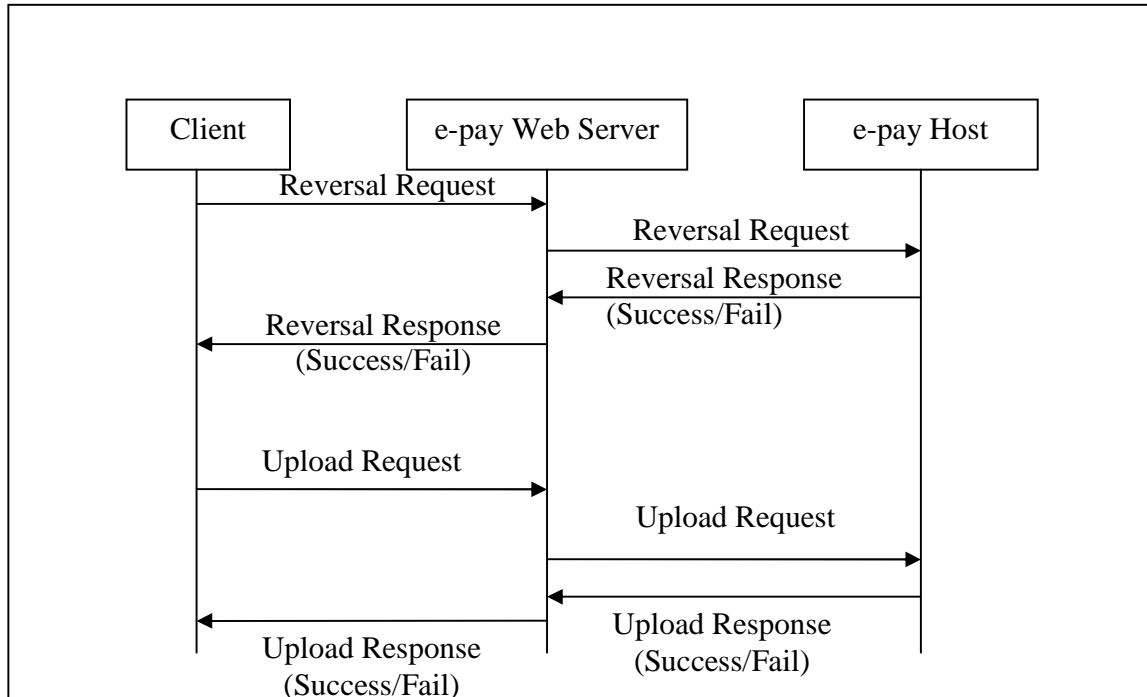


3.12 PaymentReversal

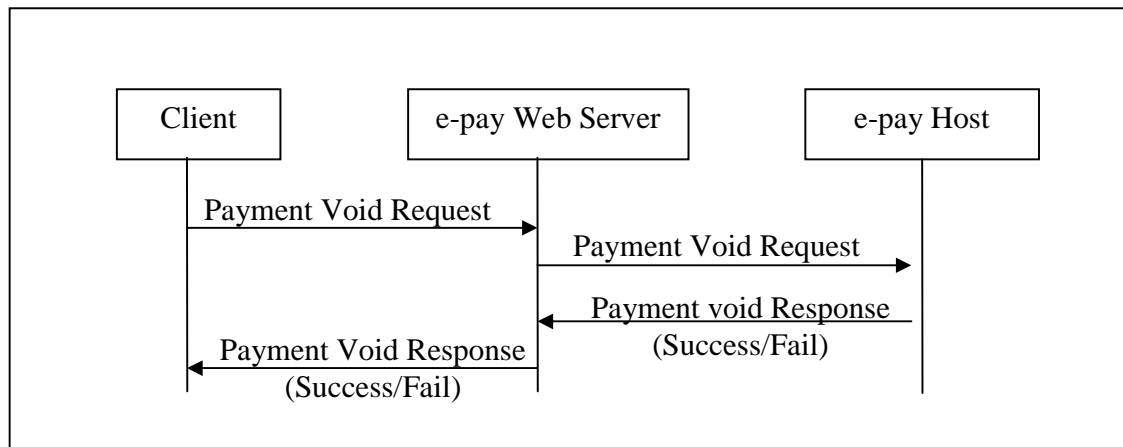




3.13 PaymentReversal (Touch 'n Go)

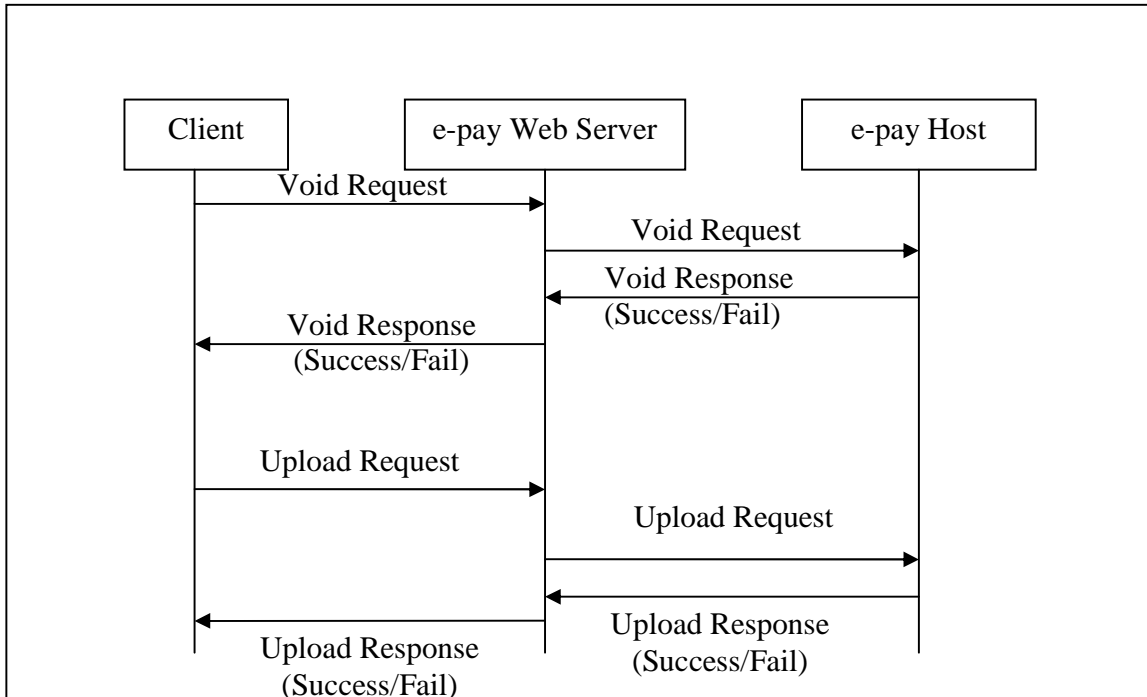


3.14 PaymentVoid

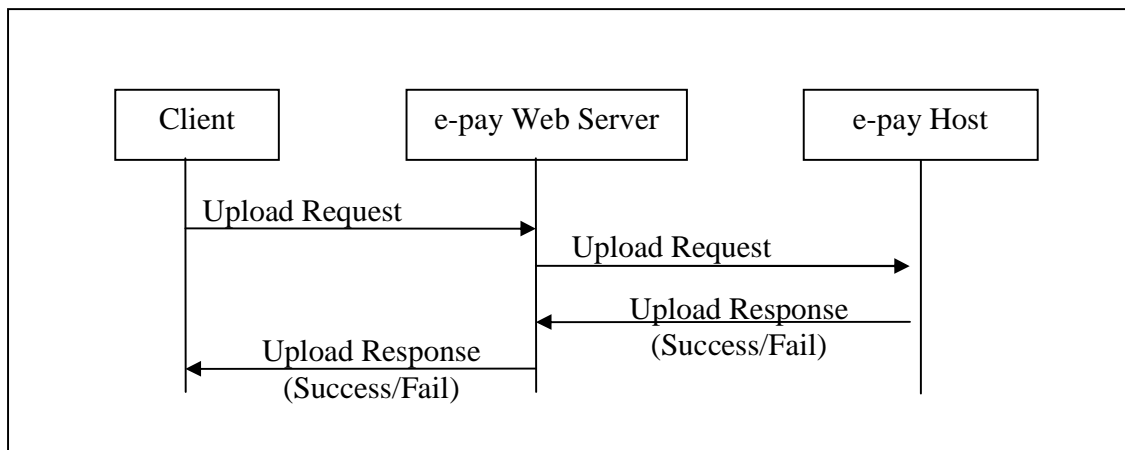




3.15 PaymentVoid (Touch 'n Go)

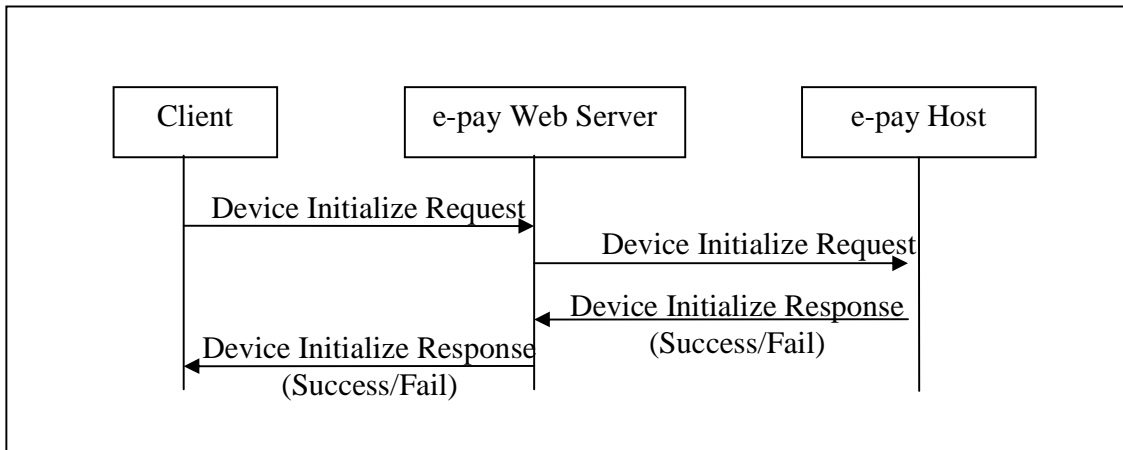


3.16 Upload

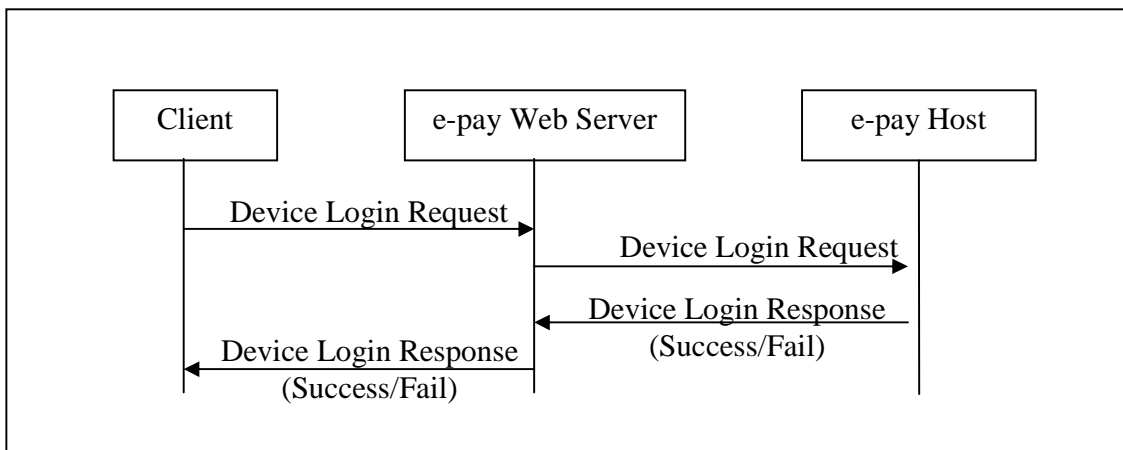




3.17 Device Initialize

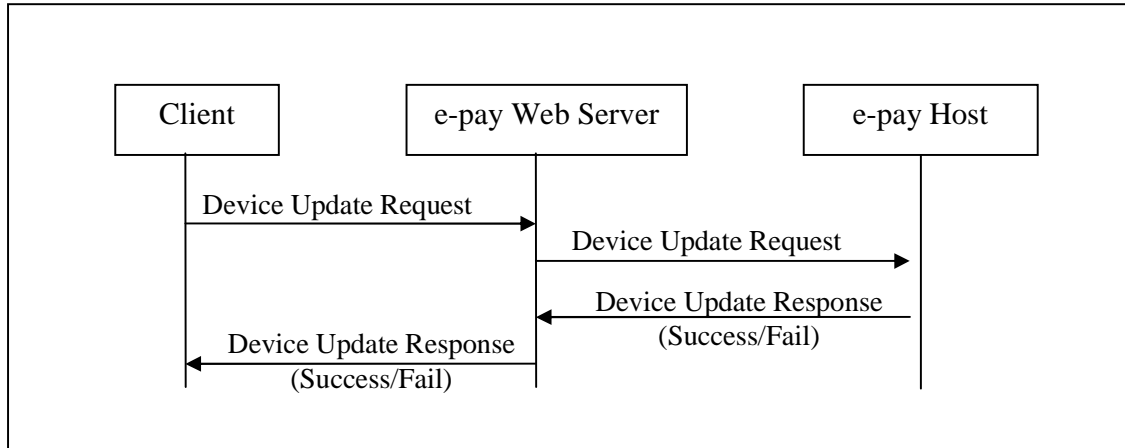


3.18 Device Login

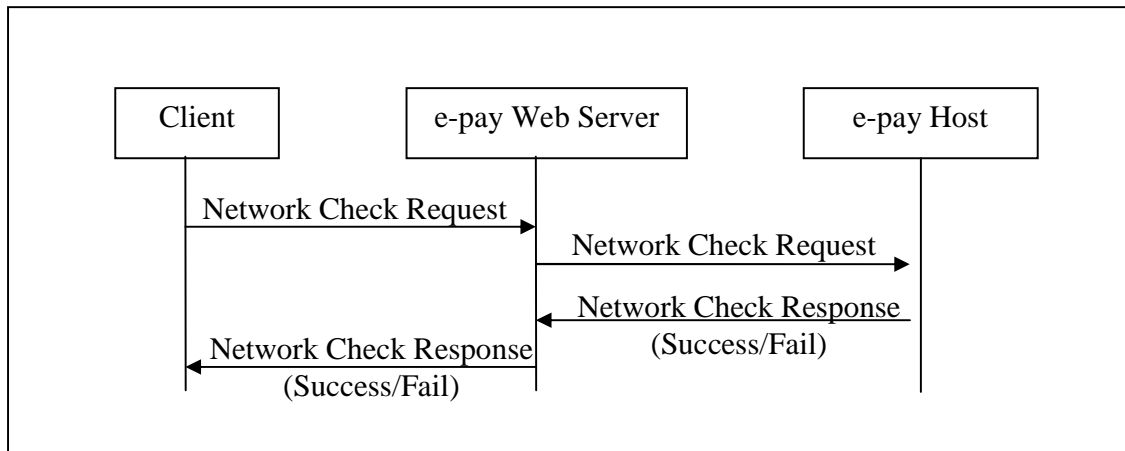




3.19 Device Update Info



3.20 Network Check



4 Online PIN Request (onlinePINRequest)

The onlinePINRequest API enables the retailer to request for prepaid PIN topup. When properly submitted, it provides the following information:

- Response code of the reload operation i.e. “00”

Otherwise, it provides the following information:

- Response code other than “00”. Example “99”

4.1 onlinePINRequest Description

This section contains information about each of the data elements included in the onlinePINRequest. The request consists of a single structural level:



The onlinePINRequest has one element which is called RequestMsg. The following table provides the fields included within the RequestMsg.

No.	Field Name	Data Type	Description	Length	Required	Valid
1.	amount	String	Denomination to be reloaded (in Cents)	11	Required	Eg. 1000
2.	merchantId	String	Merchant id provided by e-pay	15	Required	
3.	operatorId	String	Channel/Operator ID	20	Required	
4.	orgTransRef	String	For Reversal only	40	Not Required	
5.	retTransRef	String	It's unique ID of client transaction reference for identifying each PIN/E-Topup transaction.	40	Required	
6.	terminalId	String	8 digits provided by e-pay	8	Required	12345678
7.	productCode	String	Product Code provided by e-pay.	30	Required	
8.	msisdn	String	Mobile no/ account no.	30	Not Required	For mobile no is start with 0.
9.	transDateTime	String	Transaction date and time	14	Required	yyyyMMddHHmmSS
10.	transTraceId	integer	Unique ID to identify each transaction request	6	Required	1 to 999999
11.	customField1	String	Custom Field 1	1000	Optional	
12.	customField2	String	Custom Field 2	1000	Optional	
13.	customField3	String	Custom Field 3	1000	Optional	
14.	customField4	String	Custom Field 4	1000	Optional	
15.	customField5	String	Custom Field 5	1000	Optional	
16.	macing	String	Macing	128	Optional	

Note:

- Seq. nos. 6 and 9 are fixed length.



- Seq. no. 5 PIN/E-Topup request and its related reversal request should have the same retTransRef. It must be unique for each PIN and E-Topup request.
- Seq. no 4 is primary key used for reversal. If no orgTrasRef is provided, retTransRef is use as key for reversal.
- Seq. no. 10 is running number and unique for all requests.
- Amount should be treated in Cents. For example, RM10.00 should enter as 1000.

4.2 onlinePINResponse Description

The following is a display of the structural levels of the onlinePINResponse:



The onlinPINResponse has one element which is called ResponseMsg. The following table provides the fields included within the ResponseMsg

No	Field Name	Data Type	Description	Length	Required	Valid
1.	amount	String	Denomination to be reloaded (in Cents)	11	Required	Eg. 1000
2.	pin	String	PIN number.	24	Optional	Not available if transaction is failed.
3.	pinExpiryDate	String	PIN expiry date.	6	Optional	yyMMdd Not available if transaction is failed or the PIN itself doesn't has the expiry date.
4.	productCode	String	Product Code provided by e-pay.	30	Required	
5.	responseCode	String	e-pay response code.	2	Required	00 is Successful, other than 00 is fail
6.	responseMsg	String	Error message.	100	Optional	Not available if transaction is successful.
7.	retTransRef	String	Client transaction reference for identifying each PIN/E-Topup transaction.	40	Required	
8.	terminalId	String	8 digits provided by e-pay	8	Required	12345678
9.	transRef	String	PIN serial number.	40	Optional	Not available if transaction is failed.
10.	customField1	String	Custom Field 1	1000	Optional	
11.	customField2	String	Custom Field 2	1000	Optional	
12.	customField3	String	Custom Field 3	1000	Optional	
13.	customField4	String	Custom Field 4	1000	Optional	
14.	customField5	String	Custom Field 5	1000	Optional	
15.	macing	String	Macing	128	Optional	

Note:

- Seq. nos. 3, 5 and 8 are fixed length.
- Amount should be treated in Cents. For example, RM10.00 should enter as 1000.
- Seq. no 10 for POS transaction it will be the PIN top up instruction.

5 E-Topup Request (etopupRequest)

The etopupRequest API enables retailer to request for prepaid PINless topup, identified by a MSISDN or an account number with a specified denomination. When properly submitted, it provides the following information:

- Response code of the reload operation i.e. “00”

Otherwise, it provides the following information:

- Response code other than “00”. Example “99”

5.1 etopupRequest Description

This section contains information about each of the data elements included in the etopupRequest. The request consists of a single structural level:



The etopupRequest has one element which is called RequestMsg. The following table provides the fields included within the RequestMsg.

No.	Field Name	Data Type	Description	Length	Required	Valid
1.	amount	String	Denomination to be reloaded (in Cents)	11	Required	Eg. 1000
2.	merchantId	String	Merchant id provided by e-pay	15	Required	
3.	operatorId	String	Channel /Operator ID	20	Required	
4.	orgTransRef	String	For reversal only	40	Not Required	
5.	retTransRef	String	Client transaction reference for identifying each PIN/E-Topup transaction.	40	Required	
6.	terminalId	String	8 digits provided by e-pay	8	Required	12345678
7.	productCode	String	Product Code provided by e-pay.	30	Required	
8.	msisdn	String	Mobile no/ account no.	30	Required	For mobile no is start with 0.
9.	transDateTime	String	Transaction date and time	14	Required	yyyyMMddHHmmSS
10.	transTraceId	integer	Unique ID to identify each transaction request	6	Required	1 to 999999
11.	customField1	String	Custom Field 1	1000	Optional	
12.	customField2	String	Custom Field 2	1000	Optional	
13.	customField3	String	Custom Field 3	1000	Optional	
14.	customField4	String	Custom Field 4	1000	Optional	
15.	customField5	String	Custom Field 5	1000	Optional	
16.	macing	String	Macing	128	Optional	

Note:

- Seq. nos. 6 and 9 are fixed length.
- Seq. no. 5 PIN/E-Topup request and its related reversal request should have the same retTransRef. It must be unique for each PIN and E-Topup request.



- Seq. no 4 is primary key used for reversal. If no orgTrasRef is provided, retTransRef is use as key for reversal.
- Seq. no. 10 is running number and unique for all requests.
- Amount should be treated in Cents. For example, RM10.00 should enter as 1000.
- Seq. no 8 for touch'n go transaction it will be the card number
- Seq. no 15 is extended data required for certain transactions, e.g touch'n go transaction

5.2 etopupResponse Description

The following is a display of the structural levels of the etopupResponse:



The etopupResponse has one element which is called ResponseMsg. The following table provides the fields included within the ResponseMsg

No	Field Name	Data Type	Description	Length	Required	Valid
1.	amount	String	Denomination to be reloaded (in Cents)	11	Required	Eg. 1000
2.	pin	String	PIN number.	24	Not required	
3.	pinExpiryDate	String	PIN expiry date.	6	Not required	
4.	productCode	String	Product Code provided by e-pay.	30	Required	
5.	responseCode	String	e-pay response code.	2	Required	00 is Successful, other than 00 is fail
6.	responseMsg	String	Error message.	100	Optional	Not available if transaction is successful.
7.	retTransRef	String	Client transaction reference for identifying each PIN/E-Topup transaction.	40	Required	
8.	terminalId	String	8 digits provided by e-pay	8	Required	12345678
9.	transRef	String	Transaction Reference returned by e-pay	40	Required	
10.	customField1	String	Custom Field 1	1000	Optional	
11.	customField2	String	Custom Field 2	1000	Optional	
12.	customField3	String	Custom Field 3	1000	Optional	
13.	customField4	String	Custom Field 4	1000	Optional	
14.	customField5	String	Custom Field 5	1000	Optional	
15.	macing	String	Macing	128	Optional	

Note:

- Seq. nos. 3, 5 and 8 are fixed length.
- Amount should be treated in Cents. For example, RM10.00 should enter as 1000.
- Seq. no. 14 is extended data required for certain transactions, e.g touch'n go transaction
- customField1 is used for topup instruction message for Prepaid reload and Touch 'n Go card balance.

6 Online PIN Reversal Request (onlinePINReversalRequest)

The onlinePINReversalRequest API enables the internet client to do reversal for an online PIN requested within a pre specified period of time. All reversal requests received after the pre specified period of time will be rejected. When properly submitted, it provides the following information:

- Response code of the reload operation i.e. “00”

Otherwise, it provides the following information:

- Response code other than “00”. Example “99”

6.1 onlinePINReversalRequest Description

This section contains information about each of the data elements included in the onlinePINReversalRequest. The request consists of a single structural level:

onlinePINReversalRequest

The onlinePINReversalRequest has one element which is called RequestMsg. The following table provides the fields included within the RequestMsg.

No	Field Name	Data Type	Description	Length	Required	Valid
1.	amount	String	Denomination to be reloaded (in Cents)	11	Required	Eg. 1000
2.	merchantId	String	Merchant id provided by e-pay	15	Required	
3.	operatorId	String	Channel/ Operator ID	20	Required	
4.	orgTransRef	String	Transaction reference returned by e-pay in ResponseMsg.	40	Optional	
5.	retTransRef	String	Client transaction reference for identifying each transaction. (Same as its PIN request transaction's retTransRef)	40	Required	
6.	terminalId	String	8 digits provided by e-pay	8	Required	12345678
7.	productCode	String	Product Code provided by e-pay.	30	Required	
8.	MSISDN	String	Mobile no/ account no.	30	Not Required	For mobile no is start with 0.
9.	transDateTime	String	Transaction date and time	14	Required	yyyyMMddHHmmSS
10.	transTraceId	integer	Unique ID to identify each transaction request	6	Required	1 to 999999
11.	customField1	String	Custom Field 1	1000	Optional	
12.	customField2	String	Custom Field 2	1000	Optional	
13.	customField3	String	Custom Field 3	1000	Optional	
14.	customField4	String	Custom Field 4	1000	Optional	
15.	customField5	String	Custom Field 5	1000	Optional	
16.	macing	String	Macing	128	Optional	

Note:

All rights reserved. This material is confidential and proprietary to e-pay (M) Sdn Bhd and no part of this material should be reproduced, published in any form by any means, electronic or mechanical including photocopy or any information storage or retrieval system nor should the material be disclosed to third parties without the written authorization of e-pay (M) Sdn Bhd.



STANDARD SPECIFICATION of e-pay WEB SERVICE

- Seq. nos. 6 and 9 are fixed length.
- Seq. no. 5 PIN/E-Topup request and its related reversal request should have the same refTransRef. It must be unique for each PIN and E-Topup request.
- Seq. no 4 is primary key used for reversal. If no orgTrasRef is provided, refTransRef is use as key for reversal.
- Seq. no. 10 is running number and unique for all requests.
- Amount should be treated in Cents. For example, RM10.00 should enter as 1000.



6.2 onlinePINReversalResponse Description

The following is a display of the structural levels of the onlinePINReversalResponse:

onlinePINReversalResponse

The onlinePINReversalResponse has one element which is called ResponseMsg. The following table provides the fields included within the ResponseMsg

No.	Field Name	Data Type	Description	Length	Required	Valid
1.	amount	String	Denomination to be reloaded (in Cents)	11	Required	Eg. 1000
2.	pin	String	PIN number.	24	Not Required	
3.	pinExpiryDate	String	PIN expiry date.	6	Not Required	
4.	productCode	String	Product Code provided by e-pay.	30	Required	
5.	responseCode	String	e-pay response code.	2	Required	00 is Successful, other than 00 is fail
6.	responseMsg	String	Error message.	100	Optional	Not available if transaction is successful.
7.	retTransRef	String	Client transaction reference for identifying each PIN/E-Topup transaction.	40	Required	
8.	terminalId	String	8 digits provided by e-pay	8	Required	12345678
9.	transRef	String	Transaction Reference returned by e-pay	40	Not required	
10.	customField1	String	Custom Field 1	1000	Optional	
11.	customField2	String	Custom Field 2	1000	Optional	
12.	customField3	String	Custom Field 3	1000	Optional	
13.	customField4	String	Custom Field 4	1000	Optional	
14.	customField5	String	Custom Field 5	1000	Optional	
15.	macing	String	Macing	128	Optional	

Note:

- Seq. no. 5 and 8 are fixed length.
- Amount should be treated in Cents. For example, RM10.00 should enter as 1000.



7 E-Topup Reversal Request (etopupReversalRequest)

The etopupReversalRequest API enables the internet client to do reversal for an E-Topup requested within a pre specified period of time. All reversal requests received after the pre specified period of time will be rejected. When properly submitted, it provides the following information:

- Response code of the reload operation i.e. “00”

Otherwise, it provides the following information:

- Response code other than “00”. Example “99”

7.1 etopupReversalRequest Description

This section contains information about each of the data elements included in the etopupReversalRequest. The request consists of a single structural level:

etopupReversalRequest

The etopupReversalRequest has one element which is called RequestMsg. The following table provides the fields included within the RequestMsg.

No.	Field Name	Data Type	Description	Length	Required	Valid
1.	amount	String	Denomination to be reloaded (in Cents)	11	Required	Eg. 1000
2.	merchantId	String	Merchant id provided by e-pay	15	Required	
3.	operatorId	String	Channel/ Operator ID	20	Required	
4.	orgTransRef	String	Transaction reference returned by e-pay in ResponseMsg	40	Optional	
5.	retTransRef	String	Client transaction reference for identifying each transaction. (Same as etopup request transaction's retTransRef)	40	Required	
6.	terminalId	String	8 digits provided by e-pay	8	Required	12345678
7.	productCode	String	Product Code provided by e-pay.	30	Required	
8.	msisdn	String	Mobile no/ account no.	30	Required	For mobile no is start with 0.
9.	transDateTime	String	Transaction date and time	14	Required	yyyyMMddHHmmSS
10.	transTraceId	integer	Unique ID to identify each transaction request	6	Required	1 to 999999
11.	customField1	String	Custom Field 1	1000	Optional	
12.	customField2	String	Custom Field 2	1000	Optional	
13.	customField3	String	Custom Field 3	1000	Optional	
14.	customField4	String	Custom Field 4	1000	Optional	
15.	customField5	String	Custom Field 5	1000	Optional	
16.	macing	String	Macing	128	Optional	

Note:

- Seq. nos. 6 and 9 are fixed length.



STANDARD SPECIFICATION of e-pay WEB SERVICE

- Seq. no. 5 PIN/E-Topup request and its related reversal request should have the same refTransRef. It must be unique for each PIN and E-Topup request.
- Seq. no 4 is primary key used for reversal. If no orgTrasRef is provided, refTransRef is use as key for reversal.
- Seq. no. 10 is running number and unique for all requests.
- Amount should be treated in Cents. For example, RM10.00 should enter as 1000.
- Seq. no 8 for touch'n go transaction it will be the card number
- Seq. no. 15 is extended data required for certain transactions, e.g touch'n go transaction



7.2 etopupReversalResponse Description

The following is a display of the structural levels of the etopupReversalResponse:

etopupReversalResponse

The etopupReversalResponse has one element which is called ResponseMsg. The following table provides the fields included within the ResponseMsg

No.	Field Name	Data Type	Description	Length	Required	Valid
1.	amount	String	Denomination to be reloaded (in Cents)	11	Required	Eg. 1000
2.	pin	String	PIN number.	24	Not required	
3.	pinExpiryDate	String	PIN expiry date.	6	Not required	
4.	productCode	String	Product Code provided by e-pay.	30	Required	
5.	responseCode	String	e-pay response code.	2	Required	00 is Successful, other than 00 is fail
6.	responseMsg	String	Error message.	100	Optional	Not available if transaction is successful.
7.	retTransRef	String	Client transaction reference for identifying each PIN/E-Topup transaction.	40	Required	
8.	terminalId	String	8 digits provided by e-pay	8	Required	12345678
9.	transRef	String	Transaction Reference returned by e-pay	40	Optional	Not available if transaction is failed
10.	customField1	String	Custom Field 1	1000	Optional	
11.	customField2	String	Custom Field 2	1000	Optional	
12.	customField3	String	Custom Field 3	1000	Optional	
13.	customField4	String	Custom Field 4	1000	Optional	
14.	customField5	String	Custom Field 5	1000	Optional	
15.	macing	String	Macing	128	Optional	

Note:

- Seq. nos. 5 and 8 are fixed length.
- Amount should be treated in Cents. For example, RM10.00 should enter as 1000.
- Seq. no. 14 is extended data required for certain transactions, e.g touch'n go transaction

8 Online PIN Void Request (onlinePINVoidRequest)

The onlinePINVoidRequest API enables the internet client to do void for an online PIN requested within a pre specified period of time. All void requests received after the pre specified period of time will be rejected. When properly submitted, it provides the following information:

- Response code of the reload operation i.e. “00”

Otherwise, it provides the following information:

- Response code other than “00”. Example “99”

8.1 onlinePINVoidRequest Description

This section contains information about each of the data elements included in the onlinePINVoidRequest. The request consists of a single structural level:

onlinePINVoidRequest

The onlinePINVoidRequest has one element which is called RequestMsg. The following table provides the fields included within the RequestMsg.



STANDARD SPECIFICATION of e-pay WEB SERVICE

No	Field Name	Data Type	Description	Length	Required	Valid
1.	amount	String	Denomination to be reloaded	11	Required	1000
2.	merchantId	String	Merchant id provided by e-pay	15	Required	
3.	operatorId	String	Channel/ Operator ID	20	Required	
4.	orgTransRef	String	Transaction reference returned by e-pay in ResponseMsg.	40	Optional	
5.	refTransRef	String	Client transaction reference for identifying each transaction. (Same as its PIN request transaction's refTransRef)	40	Required	
6.	terminalId	String	8 digits provided by e-pay	8	Required	12345678
7.	productCode	String	Product Code provided by e-pay.	30	Required	
8.	MSISDN	String	MSISDN	30	Not Required	
9.	transDateTime	String	Transaction date and time	14	Required	yyyyMMddHHmmSS
10.	transTraceId	integer	Unique ID to identify each transaction request	6	Required	1 to 999999
11.	customField1	String	Custom Field 1	1000	Optional	
12.	customField2	String	Custom Field 2	1000	Optional	
13.	customField3	String	Custom Field 3	1000	Optional	
14.	customField4	String	Custom Field 4	1000	Optional	
15.	customField5	String	Custom Field 5	1000	Optional	
16.	macing	String	Macing	128	Optional	

Note:

- Seq. nos. 6 and 9 are fixed length.
- Seq. no. 5 PIN request and its related void request should have the same refTransRef. It must be unique for each PIN/E-Topup/Payment request.
- Seq. no 4 is primary key used for reversal. If no orgTrasRef is provided, refTransRef is use as key for reversal.
- Seq. no. 10 is running number and unique for all requests.
- Amount should be treated in Cents. For example, RM10.00 should enter as 1000.



8.2 onlinePINVoidResponse Description

The following is a display of the structural levels of the onlinePINVoidResponse:

onlinePINVoidResponse

The onlinePINVoidResponse has one element which is called ResponseMsg. The following table provides the fields included within the ResponseMsg

No	Field Name	Data Type	Description	Length	Required	Valid
1.	amount	String	Denomination to be reloaded	11	Required	1000
2.	pin	String	PIN number.	24	Not Required	
3.	pinExpiryDate	String	PIN expiry date.	6	Not Required	
4.	productCode	String	Product Code provided by e-pay.	30	Required	
5.	responseCode	String	e-pay response code.	2	Required	00 is Successful, other than 00 is fail
6.	responseMsg	String	Error message.	100	Optional	Not available if transaction is successful.
7.	refTransRef	String	Client transaction reference for identifying each PIN/E-Topup transaction.	40	Required	
8.	terminalId	String	8 digits provided by e-pay	8	Required	12345678
9.	transRef	String	Transaction Reference returned by e-pay	40	Not required	
10.	customField1	String	Custom Field 1	1000	Optional	
11.	customField2	String	Custom Field 2	1000	Optional	
12.	customField3	String	Custom Field 3	1000	Optional	
13.	customField4	String	Custom Field 4	1000	Optional	
14.	customField5	String	Custom Field 5	1000	Optional	
15.	macing	String	Macing	128	Optional	

Note:

- Seq. no. 5 and 8 are fixed length.
- Amount should be treated in Cents. For example, RM10.00 should enter as 1000.

9 E-Topup Void Request (etopupVoidRequest)

The etopupVoidRequest API enables the internet client to do void for an E-Topup requested within a pre specified period of time. All void requests received after the pre specified period of time will be rejected. When properly submitted, it provides the following information:

- Response code of the reload operation i.e. “00”

Otherwise, it provides the following information:

- Response code other than “00”. Example “99”

9.1 etopupVoidRequest Description

This section contains information about each of the data elements included in the etopupVoidRequest. The request consists of a single structural level:

etopupVoidRequest

The etopupVoidRequest has one element which is called RequestMsg. The following table provides the fields included within the RequestMsg.



STANDARD SPECIFICATION of e-pay WEB SERVICE

No	Field Name	Data Type	Description	Length	Required	Valid
1.	amount	String	Denomination to be reloaded	11	Required	1000
2.	merchantId	String	Merchant id provided by e-pay	15	Required	
3.	operatorId	String	Channel/ Operator ID	20	Required	
4.	orgTransRef	String	Transaction reference returned by e-pay in ResponseMsg	40	Optional	
5.	refTransRef	String	Client transaction reference for identifying each transaction. (Same as its E-Topup request transaction's refTransRef)	40	Required	
6.	terminalId	String	8 digits provided by e-pay	8	Required	12345678
7.	productCode	String	Product Code provided by e-pay.	30	Required	
8.	msisdn	String	MSISDN/ Card number	30	Required	
9.	transDateTime	String	Transaction date and time	14	Required	yyyyMMddHHmmSS
10.	transTraceId	integer	Unique ID to identify each transaction request	6	Required	1 to 999999
11.	customField1	String	Custom Field 1	1000	Optional	
12.	customField2	String	Custom Field 2	1000	Optional	
13.	customField3	String	Custom Field 3	1000	Optional	
14.	customField4	String	Custom Field 4	1000	Optional	
15.	customField5	String	Custom Field 5	1000	Optional	
16.	macing	String	Macing	128	Optional	

Note:

- Seq. nos. 6 and 9 are fixed length.
- Seq. no. 5 E-Topup request and its related void request should have the same refTransRef. It must be unique for each PIN/E-Topup/Payment request.
- Seq. no 4 is primary key used for reversal. If no orgTrasRef is provided, refTransRef is use as key for reversal.
- Seq. no. 10 is running number and unique for all requests.
- Amount should be treated in Cents. For example, RM10.00 should enter as 1000.
- Seq. no 8 for touch'n go transaction it will be the card number
- Seq. no 15 is extended data required for certain transactions, e.g touch'n go transaction



9.2 etopupVoidResponse Description

The following is a display of the structural levels of the etopupVoidResponse:

etopupVoidResponse

The etopupVoidResponse has one element which is called ResponseMsg. The following table provides the fields included within the ResponseMsg

No	Field Name	Data Type	Description	Length	Required	Valid
1.	amount	String	Denomination to be reloaded	11	Required	1000
2.	pin	String	PIN number.	24	Not required	
3.	pinExpiryDate	String	PIN expiry date.	6	Not required	
4.	productCode	String	Product Code provided by e-pay.	30	Required	
5.	responseCode	String	e-pay response code.	2	Required	00 is Successful, other than 00 is fail
6.	responseMsg	String	Error message.	100	Optional	Not available if transaction is successful.
7.	refTransRef	String	Client transaction reference for identifying each PIN/E-Topup transaction.	40	Required	
8.	terminalId	String	8 digits provided by e-pay	8	Required	12345678
9.	transRef	String	Transaction Reference returned by e-pay	40	Optional	Not available if transaction is failed
10.	customField1	String	Custom Field 1	1000	Optional	
11.	customField2	String	Custom Field 2	1000	Optional	
12.	customField3	String	Custom Field 3	1000	Optional	
13.	customField4	String	Custom Field 4	1000	Optional	
14.	customField5	String	Custom Field 5	1000	Optional	
15.	macing	String	Macing	128	Optional	

Note:

- Seq. nos. 5 and 8 are fixed length.
- Amount should be treated in Cents. For example, RM10.00 should enter as 1000.
- Seq. no. 14 is extended data required for certain transactions, e.g touch'n go transaction

10 Payment Request (paymentRequest)

The paymentRequest API enables retailer to request for payment service, identified by a MSISDN or an account number with a specified denomination. When properly submitted, it provides the following information:

- Response code of the reload operation i.e. “00”

Otherwise, it provides the following information:

- Response code other than “00”. Example “99”

10.1 paymentRequest Description

This section contains information about each of the data elements included in the paymentRequest. The request consists of a single structural level:

paymentRequest

The paymentRequest has one element which is called RequestMsg. The following table provides the fields included within the RequestMsg.



STANDARD SPECIFICATION of e-pay WEB SERVICE

No	Field Name	Data Type	Description	Length	Required	Valid
1.	amount	String	Denomination to be reloaded	11	Required	1000
2.	merchantId	String	Merchant id provided by e-pay	15	Required	
3.	operatorId	String	Channel /Operator ID	20	Required	
4.	orgTransRef	String	For reversal only	40	Not Required	
5.	retTransRef	String	It's unique ID of client transaction reference for identifying each PIN/E-Topup/Payment transaction.	40	Required	
6.	terminalId	String	8 digits provided by e-pay	8	Required	12345678
7.	productCode	String	Product Code provided by e-pay.	30	Required	
8.	msisdn	String	MSISDN/Card Number	30	Required	
9.	transDateTime	String	Transaction date and time	14	Required	yyyyMMddHHmmSS
10.	transTraceId	integer	Unique ID to identify each transaction request	6	Required	1 to 999999
11.	customField1	String	Custom Field 1	1000	Optional	
12.	customField2	String	Custom Field 2	1000	Optional	
13.	customField3	String	Custom Field 3	1000	Optional	
14.	customField4	String	Custom Field 4	1000	Optional	
15.	customField5	String	Custom Field 5	1000	Optional	
16.	macing	String	Macing	128	Optional	

Note:

- Seq. nos. 6 and 9 are fixed length.
- Seq. no. 5 Payment request and its related reversal and void request should have the same retTransRef. It must be unique for each PIN/E-Topup/Payment request.
- Seq. no 4 is primary key used for reversal. If no orgTrasRef is provided, retTransRef is use as key for reversal.
- Seq. no. 10 is running number and unique for all requests.
- Amount should be treated in Cents. For example, RM10.00 should enter as 1000.
- Seq. no 8 for touch'n go transaction it will be the card number
- Seq. no. 15 is extended data required for certain transactions, e.g touch'n go transaction



10.2 paymentResponse Description

The following is a display of the structural levels of the paymentResponse:

paymentResponse

The paymentResponse has one element which is called ResponseMsg. The following table provides the fields included within the ResponseMsg

No	Field Name	Data Type	Description	Length	Required	Valid
1.	amount	String	Denomination to be reloaded	11	Required	1000
2.	pin	String	PIN number.	24	Not required	
3.	pinExpiryDate	String	PIN expiry date.	6	Not required	
4.	productCode	String	Product Code provided by e-pay.	30	Required	
5.	responseCode	String	e-pay response code.	2	Required	00 is Successful, other than 00 is fail
6.	responseMsg	String	Error message.	100	Optional	Not available if transaction is successful.
7.	refTransRef	String	Client transaction reference for identifying each PIN/E-Topup/Payment transaction.	40	Required	
8.	terminalId	String	8 digits provided by e-pay	8	Required	12345678
9.	transRef	String	Transaction Reference returned by e-pay	40	Required	
10.	customField1	String	Custom Field 1	1000	Optional	
11.	customField2	String	Custom Field 2	1000	Optional	
12.	customField3	String	Custom Field 3	1000	Optional	
13.	customField4	String	Custom Field 4	1000	Optional	
14.	customField5	String	Custom Field 5	1000	Optional	
15.	macing	String	Macing	128	Optional	

Note:

- Seq. nos. 3, 5 and 8 are fixed length.
- Amount should be treated in Cents. For example, RM10.00 should enter as 1000.
- Seq. no. 14 is extended data required for certain transactions, e.g touch'n go transaction

11 Payment Reversal Request (paymentReversalRequest)

The paymentReversalRequest API enables the client to do reversal for a payment requested within a pre specified period of time. All reversal requests received after the pre specified period of time will be rejected. When properly submitted, it provides the following information:

- Response code of the reload operation i.e. “00”

Otherwise, it provides the following information:

- Response code other than “00”. Example “99”

11.1 paymentReversalRequest Description

This section contains information about each of the data elements included in the paymentReversalRequest. The request consists of a single structural level:

paymentReversalRequest

The paymentReversalRequest has one element which is called RequestMsg. The following table provides the fields included within the RequestMsg.



STANDARD SPECIFICATION of e-pay WEB SERVICE

No	Field Name	Data Type	Description	Length	Required	Valid
1.	amount	String	Denomination to be reloaded	11	Required	1000
2.	merchantId	String	Merchant id provided by e-pay	15	Required	
3.	operatorId	String	Channel/ Operator ID	20	Required	
4.	orgTransRef	String	Transaction reference returned by e-pay in ResponseMsg	40	Optional	
5.	retTransRef	String	Client transaction reference for identifying each transaction. (Same as its Payment request transaction's retTransRef)	40	Required	
6.	terminalId	String	8 digits provided by e-pay	8	Required	12345678
7.	productCode	String	Product Code provided by e-pay.	30	Required	
8.	msisdn	String	MSISDN/ Card Number	30	Required	
9.	transDateTime	String	Transaction date and time	14	Required	yyyyMMddHHmmSS
10.	transTraceId	integer	Unique ID to identify each transaction request	6	Required	1 to 999999
11.	customField1	String	Custom Field 1	1000	Optional	
12.	customField2	String	Custom Field 2	1000	Optional	
13.	customField3	String	Custom Field 3	1000	Optional	
14.	customField4	String	Custom Field 4	1000	Optional	
15.	customField5	String	Custom Field 5	1000	Optional	
16.	macing	String	Macing	128	Optional	

Note:

- Seq. nos. 6 and 9 are fixed length.
- Seq. no. 5 Payment request and its related reversal request should have the same retTransRef. It must be unique for each PIN/E-Topup/Payment request.
- Seq. no 4 is primary key used for reversal. If no orgTrasRef is provided, retTransRef is use as key for reversal.
- Seq. no. 10 is running number and unique for all requests.
- Amount should be treated in Cents. For example, RM10.00 should enter as 1000.
- Seq. no 8 for touch'n go transaction it will be the card number
- Seq. no 15 is extended data required for certain transactions, e.g touch'n go transaction



11.2 paymentReversalResponse Description

The following is a display of the structural levels of the paymentReversalResponse:

paymentReversalResponse

The paymentReversalResponse has one element which is called ResponseMsg. The following table provides the fields included within the ResponseMsg

No	Field Name	Data Type	Description	Length	Required	Valid
1.	amount	String	Denomination to be reloaded	11	Required	1000
2.	pin	String	PIN number.	24	Not required	
3.	pinExpiryDate	String	PIN expiry date.	6	Not required	
4.	productCode	String	Product Code provided by e-pay.	30	Required	
5.	responseCode	String	e-pay response code.	2	Required	00 is Successful, other than 00 is fail
6.	responseMsg	String	Error message.	100	Optional	Not available if transaction is successful.
7.	refTransRef	String	Client transaction reference for identifying each PIN/E-Topup/Payment transaction.	40	Required	
8.	terminalId	String	8 digits provided by e-pay	8	Required	12345678
9.	transRef	String	Transaction Reference returned by e-pay	40	Optional	Not available if transaction is failed
10.	customField1	String	Custom Field 1	1000	Optional	
11.	customField2	String	Custom Field 2	1000	Optional	
12.	customField3	String	Custom Field 3	1000	Optional	
13.	customField4	String	Custom Field 4	1000	Optional	
14.	customField5	String	Custom Field 5	1000	Optional	
15.	macing	String	Macing	128	Optional	

Note:

- Seq. nos. 5 and 8 are fixed length.
- Amount should be treated in Cents. For example, RM10.00 should enter as 1000.
- Seq. no. 14 is extended data required for certain transactions, e.g touch'n go transaction



12 Payment Void Request (paymentVoidRequest)

The paymentVoidRequest API enables the client to do void for a payment requested within a pre specified period of time. All void requests received after the pre specified period of time will be rejected. When properly submitted, it provides the following information:

- Response code of the reload operation i.e. “00”

Otherwise, it provides the following information:

- Response code other than “00”. Example “99”

12.1 paymentVoidRequest Description

This section contains information about each of the data elements included in the paymentVoidRequest. The request consists of a single structural level:

paymentVoidRequest

The paymentVoidRequest has one element which is called RequestMsg. The following table provides the fields included within the RequestMsg.



STANDARD SPECIFICATION of e-pay WEB SERVICE

No	Field Name	Data Type	Description	Length	Required	Valid
1.	amount	String	Denomination to be reloaded	11	Required	1000
2.	merchantId	String	Merchant id provided by e-pay	15	Required	
3.	operatorId	String	Channel/ Operator ID	20	Required	
4.	orgTransRef	String	Transaction reference returned by e-pay in ResponseMsg	40	Optional	
5.	refTransRef	String	Client transaction reference for identifying each transaction. (Same as its Payment request transaction's refTransRef)	40	Required	
6.	terminalId	String	8 digits provided by e-pay	8	Required	12345678
7.	productCode	String	Product Code provided by e-pay.	30	Required	
8.	msisdn	String	MSISDN/ Card Number	30	Required	
9.	transDateTime	String	Transaction date and time	14	Required	yyyyMMddHHmmSS
10.	transTraceId	integer	Unique ID to identify each transaction request	6	Required	1 to 999999
11.	customField1	String	Custom Field 1	1000	Optional	
12.	customField2	String	Custom Field 2	1000	Optional	
13.	customField3	String	Custom Field 3	1000	Optional	
14.	customField4	String	Custom Field 4	1000	Optional	
15.	customField5	String	Custom Field 5	1000	Optional	
16.	macing	String	Macing	128	Optional	

Note:

- Seq. nos. 6 and 9 are fixed length.
- Seq. no. 5 Payment request and its related void request should have the same refTransRef. It must be unique for each PIN/E-Topup/Payment request.
- Seq. no 4 is primary key used for reversal. If no orgTrasRef is provided, refTransRef is use as key for reversal.
- Seq. no. 10 is running number and unique for all requests.
- Amount should be treated in Cents. For example, RM10.00 should enter as 1000.
- Seq. no 8 for touch'n go transaction it will be the card number
- Seq. no. 15 is extended data required for certain transactions, e.g touch'n go transaction



12.2 paymentVoidResponse Description

The following is a display of the structural levels of the paymentVoidResponse:

paymentVoidResponse

The paymentVoidResponse has one element which is called ResponseMsg. The following table provides the fields included within the ResponseMsg

No	Field Name	Data Type	Description	Length	Required	Valid
1.	Amount	String	Denomination to be reloaded	11	Required	1000
2.	Pin	String	PIN number.	24	Not required	
3.	pinExpiryDate	String	PIN expiry date.	6	Not required	
4.	productCode	String	Product Code provided by e-pay.	30	Required	
5.	responseCode	String	e-pay response code.	2	Required	00 is Successful, other than 00 is fail
6.	responseMsg	String	Error message.	100	Optional	Not available if transaction is successful.
7.	retTransRef	String	Client transaction reference for identifying each PIN/E-Topup/Payment transaction.	40	Required	
8.	terminalId	String	8 digits provided by e-pay	8	Required	12345678
9.	transRef	String	Transaction Reference returned by e-pay	40	Optional	Not available if transaction is failed
10.	customField1	String	Custom Field 1	1000	Optional	
11.	customField2	String	Custom Field 2	1000	Optional	
12.	customField3	String	Custom Field 3	1000	Optional	
13.	customField4	String	Custom Field 4	1000	Optional	
14.	customField5	String	Custom Field 5	1000	Optional	
15.	macing	String	Macing	128	Optional	

Note:

- Seq. nos. 5 and 8 are fixed length.
- Amount should be treated in Cents. For example, RM10.00 should enter as 1000.
- Seq. no. 14 is extended data required for certain transactions, e.g touch'n go transaction

13 Upload Request (uploadRequest)

The uploadRequest API enables retailer to upload related data of other request such as onlinePIN, etopup and payment request. When properly submitted, it provides the following information:

- Response code of the reload operation i.e. “00”

Otherwise, it provides the following information:

- Response code other than “00”. Example “99”

13.1 uploadRequest Description

This section contains information about each of the data elements included in the uploadRequest. The request consists of a single structural level:

uploadRequest

The uploadRequest has one element which is called RequestMsg. The following table provides the fields included within the RequestMsg.



STANDARD SPECIFICATION of e-pay WEB SERVICE

No	Field Name	Data Type	Description	Length	Required	Valid
1.	amount	String	Denomination to be reloaded	11	Required	1000
2.	merchantId	String	Merchant id provided by e-pay	15	Required	
3.	operatorId	String	Channel /Operator ID	20	Required	
4.	orgTransRef	String	For reversal only	40	Not Required	
5.	refTransRef	String	Client transaction reference for identifying each PIN/E-Topup/Payment transaction.	40	Required	
6.	terminalId	String	8 digits provided by e-pay	8	Required	12345678
7.	productCode	String	Product Code provided by e-pay.	30	Required	
8.	msisdn	String	MSISDN/Card Number	30	Required	
9.	transDateTime	String	Transaction date and time	14	Required	yyyyMMddHHmmSS
10.	transTraceId	integer	Unique ID to identify each transaction request	6	Required	1 to 999999
11.	customField1	String	Custom Field 1	1000	Optional	
12.	customField2	String	Custom Field 2	1000	Optional	
13.	customField3	String	Custom Field 3	1000	Optional	
14.	customField4	String	Custom Field 4	1000	Optional	
15.	customField5	String	Custom Field 5	1000	Optional	
16.	macing	String	Macing	128	Optional	

Note:

- Seq. nos. 6 and 9 are fixed length.
- Seq. no. 10 is running number and unique for all requests.
- Amount should be treated in Cents. For example, RM10.00 should enter as 1000.
- Seq. no. 15 is extended data required for certain transactions, e.g touch'n go transaction



1.1.1 uploadResponse Description

The following is a display of the structural levels of the uploadResponse:

uploadResponse

The uploadResponse has one element which is called ResponseMsg. The following table provides the fields included within the ResponseMsg

No	Field Name	Data Type	Description	Length	Required	Valid
1.	amount	String	Denomination to be reloaded	11	Required	1000
2.	pin	String	PIN number.	24	Not required	
3.	pinExpiryDate	String	PIN expiry date.	6	Not required	
4.	productCode	String	Product Code provided by e-pay.	30	Required	
5.	responseCode	String	e-pay response code.	2	Required	00 is Successful, other than 00 is fail
6.	responseMsg	String	Error message.	100	Optional	Not available if transaction is successful.
7.	refTransRef	String	Client transaction reference for identifying each PIN/E-Topup/Payment transaction.	40	Required	
8.	terminalId	String	8 digits provided by e-pay	8	Required	12345678
9.	transRef	String	Transaction Reference returned by e-pay	40	Required	
10.	customField1	String	Custom Field 1	1000	Optional	
11.	customField2	String	Custom Field 2	1000	Optional	
12.	customField3	String	Custom Field 3	1000	Optional	
13.	customField4	String	Custom Field 4	1000	Optional	
14.	customField5	String	Custom Field 5	1000	Optional	
15.	macing	String	Macing	128	Optional	

Note:

- Seq. nos. 3, 5 and 8 are fixed length.
- Amount should be treated in Cents. For example, RM10.00 should enter as 1000.
- Seq. no. 14 is extended data required for certain transactions, e.g touch'n go transaction



14 Device Initialize Request (deviceInitRequest)

The deviceInitRequest API enables retailer to initialize the device. When properly submitted, it provides the following information:

- Response code of the reload operation i.e. “00”

Otherwise, it provides the following information:

- Response code other than “00”. Example “99”

14.1 deviceInitRequest Description

This section contains information about each of the data elements included in the deviceInitRequest. The request consists of a single structural level:

deviceInitRequest

The deviceInitRequest has one element which is called DeviceRequestMsg. The following table provides the fields included within the DeviceRequestMsg.

No	Field Name	Data Type	Description	Length	Required	Valid
1.	merchantId	String	Merchant id provided by e-pay	15	Required	
2.	terminalId	String	8 digits provided by e-pay	8	Required	12345678
3.	deviceInfo	String	device information	1000	Required	
4.	deviceType	String	Device type	2	Required	01 – Reader 02 – Terminal 03 – POS 04 – Others
5.	macing	String	Macing	128	Optional	

Note:

- Seq. no 2 is fixed length.
- Seq. no 3 for touch'n go transaction it will be the reader information



14.2 deviceInitResponse Description

The following is a display of the structural levels of the deviceInitResponse:

deviceInitResponse

The deviceInitResponse has one element which is called DeviceResponseMsg. The following table provides the fields included within the DeviceResponseMsg

No	Field Name	Data Type	Description	Length	Required	Valid
1.	terminalId	String	8 digits provided by e-pay	8	Required	12345678
2.	responseCode	String	e-pay response code.	2	Required	00 is Successful, other than 00 is fail
3.	responseMsg	String	Error message.	100	Optional	Not available if transaction is successful.
4.	deviceData	String	Device Data	1000	Required	
5.	macing	String	Macing	128	Optional	

Note:

- Seq. no 1 is fixed length.
- Seq. no 4 for touch'n go transaction it will be the reader initialize data

15 Device Login Request (deviceLoginRequest)

The deviceLoginRequest API enables retailer to login to the device. When properly submitted, it provides the following information:

- Response code of the reload operation i.e. "00"

Otherwise, it provides the following information:

- Response code other than "00". Example "99"



15.1 deviceLoginRequest Description

This section contains information about each of the data elements included in the deviceLoginRequest. The request consists of a single structural level:

deviceLoginRequest

The deviceLoginRequest has one element which is called DeviceRequestMsg. The following table provides the fields included within the DeviceRequestMsg.

No	Field Name	Data Type	Description	Length	Required	Valid
1.	merchantId	String	Merchant id provided by e-pay	15	Required	
2.	terminalId	String	8 digits provided by e-pay	8	Required	12345678
3.	deviceInfo	String	device information	1000	Required	
4.	deviceType	String	Device type	2	Required	01 – Reader 02 – Terminal 03 – POS 04 - Others
5.	macing	String	Macing	128	Optional	

Note:

- Seq. no 2 is fixed length.
- Seq. no 3 for touch'n go transaction it will be the reader information



15.2 deviceLoginResponse Description

The following is a display of the structural levels of the deviceLoginResponse:

deviceLoginResponse

The deviceLoginResponse has one element which is called DeviceResponseMsg. The following table provides the fields included within the DeviceResponseMsg

No	Field Name	Data Type	Description	Length	Required	Valid
1.	terminalId	String	8 digits provided by e-pay	8	Required	12345678
2.	responseCode	String	e-pay response code.	2	Required	00 is Successful, other than 00 is fail
3.	responseMsg	String	Error message.	100	Optional	Not available if transaction is successful.
4	deviceData	String	Device Data	1000	Required	
5.	macing	String	Macing	128	Optional	

Note:

- Seq. no 1 is fixed length.
- Seq. no 4 for touch'n go transaction it will be the reader login data



16 Device Update Information Request (deviceUpdateRequest)

The deviceUpdateRequest API enables retailer to update the device information to host. When properly submitted, it provides the following information:

- Response code of the reload operation i.e. “00”

Otherwise, it provides the following information:

- Response code other than “00”. Example “99”

16.1 deviceUpdateRequest Description

This section contains information about each of the data elements included in the deviceUpdateRequest. The request consists of a single structural level:

The deviceUpdateRequest has one element which is called DeviceRequestMsg. The following table provides the fields included within the DeviceRequestMsg.

No	Field Name	Data Type	Description	Length	Required	Valid
1.	merchantId	String	Merchant id provided by e-pay	15	Required	
2.	terminalId	String	8 digits provided by e-pay	8	Required	12345678
3.	deviceInfo	String	device information	1000	Required	
4.	deviceType	String	Device type	2	Required	01 – Reader 02 – Terminal 03 – POS 04 - Others
5.	macing	String	Macing	128	Optional	

Note:

- Seq. no 2 is fixed length.
- Seq. no 3 for touch'n go transaction it will be the reader information



16.2 deviceUpdateResponse Description

The following is a display of the structural levels of the deviceUpdateResponse:

deviceUpdateResponse

The deviceUpdateResponse has one element which is called DeviceResponseMsg. The following table provides the fields included within the DeviceResponseMsg

No	Field Name	Data Type	Description	Length	Required	Valid
1.	terminalId	String	8 digits provided by e-pay	8	Required	12345678
2.	responseCode	String	e-pay response code.	2	Required	00 is Successful, other than 00 is fail
3.	responseMsg	String	Error message.	100	Optional	Not available if transaction is successful.
4	deviceData	String	Device Data	1000	Not Required	
5.	macing	String	Macing	128	Optional	

Note:

- Seq. no 1 is fixed length.



17 Network Check Request (networkCheckRequest)

The networkCheckRequest API enables retailer to check the availability of e-pay web service whether is up or down. When properly submitted, it provides the following information:

- Response code of the reload operation i.e. “00”

Otherwise, it will prompt error.

17.1 networkCheckRequest Description

This section contains information about each of the data elements included in the networkCheckRequest. The request consists of a single structural level:

networkCheckRequest

The networkCheckRequest has one element which is called RequestMsg. The following table provides the fields included within the RequestMsg.

No	Field Name	Data Type	Description	Length	Required	Valid
1.	amount	String	Denomination to be reloaded	11	Not Required	1000
2.	merchantId	String	Merchant id provided by e-pay	15	Not Required	
3.	operatorId	String	Channel /Operator ID	20	Not Required	
4.	orgTransRef	String	For reversal only	40	Not Required	
5.	retTransRef	String	Client transaction reference for identifying each PIN/E-Topup/Payment transaction.	40	Not Required	
6.	terminalId	String	8 digits provided by e-pay	8	Required	12345678
7.	productCode	String	Product Code provided by e-pay.	30	Not Required	
8.	msisdn	String	MSISDN/Card Number	30	Not Required	
9.	transDateTime	String	Transaction date and time	14	Not Required	yyyyMMddHHmmSS
10.	transTraceId	integer	Unique ID to identify each transaction request	6	Not Required	1 to 999999
11.	customField1	String	Custom Field 1	1000	Not Required	
12.	customField2	String	Custom Field 2	1000	Not Required	
13.	customField3	String	Custom Field 3	1000	Not Required	
14.	customField4	String	Custom Field 4	1000	Not Required	
15.	customField5	String	Custom Field 5	1000	Not Required	
16.	macing	String	Macing	128	Not Required	



STANDARD SPECIFICATION of e-pay WEB SERVICE

Note:

- Seq. nos. 6 and 9 are fixed length.



17.2 networkCheckResponse Description

The following is a display of the structural levels of the networkCheckResponse:

networkCheckResponse

The networkCheckResponse has one element which is called ResponseMsg. The following table provides the fields included within the ResponseMsg

No	Field Name	Data Type	Description	Length	Required	Valid
1.	amount	String	Denomination to be reloaded	11	Not required	1000
2.	pin	String	PIN number.	24	Not required	
3.	pinExpiryDate	String	PIN expiry date.	6	Not required	
4.	productCode	String	Product Code provided by e-pay.	30	Not required	
5.	responseCode	String	e-pay response code.	2	Required	00 is Successful, other than 00 is fail
6.	responseMsg	String	Error message.	100	Optional	Not available if transaction is successful.
7.	retTransRef	String	Client transaction reference for identifying each PIN/E-Topup/Payment transaction.	40	Not required	
8.	terminalId	String	8 digits provided by e-pay	8	Not required	12345678
9.	transRef	String	Transaction Reference returned by e-pay	40	Not required	
10.	customField1	String	Custom Field 1	1000	Not required	
11.	customField2	String	Custom Field 2	1000	Not required	
12.	customField3	String	Custom Field 3	1000	Not required	
13.	customField4	String	Custom Field 4	1000	Not required	
14.	customField5	String	Custom Field 5	1000	Not required	
15.	macing	String	Macing	128	Not required	

Note:

- Seq. nos. 3, 5 and 8 are fixed length.

18 Reconciliation

18.1 Reconciliation File

In order to facilitate transaction, end-of-day reconciliation file should be transferred to e-pay FTP server (via FTP service) for retrieval by e-pay. Details of the file format as below:

18.2 Reconciliation File Format

File naming convention for recon file: XXXYYMMDD.CSV

XXX: Merchant's name in short. Ex : HLB, AMB etc

YYMMDD : Transaction date in yyMMdd format

Example : HLB071116.CSV, AMB071116.CSV

Header Record format:

No	Field Name	Data Type	Description	Length	Required	Valid
1.	Record Type	String	To indicate Header	1	Required	H
2.	Merchant Name	String	Merchant's name in short	3	Required	HLB, AMB
3.	File Date	String	Date of the file generated	8	Required	yyyyMMdd
4.	File Sequence	Integer	Sequence Number	2	Required	
5.	Last Ret Trans Ref	String	Last client's transaction reference	40	Optional	

Detail Record format:

No	Field Name	Data Type	Description	Length	Required	Valid
1.	Record Type	String	To indicate Detail	1	Required	D
2.	Merchant ID	String	Merchant ID of transaction	15	Required	
3.	Operator ID	String	Channel/ Operator ID	20	Required	
4.	Terminal ID	String	Terminal ID	8	Required	
5.	Ret Trans Ref	String	Client's transaction reference	40	Required	
6.	Product Code	String	Product Code	30	Required	
7.	MSISDN	String	Mobile no/ account no	30	Optional	Required for E-Topup only
8.	Amount	String	Denomination to be reloaded (in 2 decimal point)	11	Required	Eg. 10.00
9.	TransType	String	Transaction Type PIN, E-Topup or Touch and Go Payment	3	Required	PIN – PIN ETU – E-Topup PMT – Payment
10.	Trans Reference	String	Transaction Reference (for E-Topup) or Serial Number (for PIN)	40	Required	
11.	Trans Date Time	String	Transaction DateTimes	14	Required	yyyyMMddHHmmSS
12.	Custom Field 1	String	Custom field 1	1000	Optional	
13.	Custom Field 2	String	Custom field 2	1000	Optional	
14.	Custom Field 3	String	Custom field 3	1000	Optional	
15.	Custom Field 4	String	Custom field 4	1000	Optional	
16.	Custom Field 5	String	Custom field 5	1000	Optional	



STANDARD SPECIFICATION of e-pay WEB SERVICE

Trailer Record Format:

No	Field Name	Data Type	Description	Length	Required	Valid
1.	Record Type	String	To indicate Trailer	1	Required	T
2.	Total Detail Record	String	Total number of detail record	11	Required	
3.	Total Amount	String	Total amount of detail record	11	Required	

Reconciliation Return File

File naming convention for recon return file: XXXYYMMDDR.CSV

XXX: Merchant's name in short. Ex : HLB, AMB etc

YYMMDD : Transaction date in yyMMdd format

Example : HLB071116R.CSV, AMB071116R.CSV

Header Record format:

No	Field Name	Data Type	Description	Length	Required	Valid
1.	Record Type	String	To indicate Header	1	Required	H
2.	Merchant Name	String	Merchant's name in short	3	Required	HLB, AMB
3.	File Date	String	Date of the file generated	8	Required	yyyyMMdd
4.	File Sequence	Integer	Sequence Number	2	Required	
5.	Last Ret Trans Ref	String	Last client's transaction reference	40	Optional	

Detail Record format:



STANDARD SPECIFICATION of e-pay WEB SERVICE

No	Field Name	Data Type	Description	Length	Required	Valid
1.	Record Type	String	To indicate Detail	1	Required	D
2.	Merchant ID	String	Merchant ID of transaction	15	Required	
3.	Operator ID	String	Channel/ Operator ID	20	Required	
4.	Terminal ID	String	Terminal ID	8	Required	
5.	Ret Trans Ref	String	Client's transaction reference	40	Required	
6.	Product Code	String	Product Code	30	Required	
7.	MSISDN	String	Mobile no/ account no	30	Optional	Required for E-Topup only
8.	Amount	String	Denomination to be reloaded (in 2 decimal point)	11	Required	Eg. 10.00
9.	TransType	String	Transaction Type PIN, E-Topup or Touch and Go Payment		Required	PIN – PIN ETU – E-Topup PMT – Payment
10.	Trans Reference	String	Transaction Reference (for E-Topup) or Serial Number (for PIN)	40	Required	
11.	Trans Date Time	String	Transaction DateTimes	14	Required	yyyyMMddHHmmSS
12.	Custom Field 1	String	Custom field 1	1000	Optional	
13.	Custom Field 2	String	Custom field 2	1000	Optional	
14.	Custom Field 3	String	Custom field 3	1000	Optional	
15.	Custom Field 4	String	Custom field 4	1000	Optional	
16.	Custom Field 5	String	Custom field 5	1000	Optional	
17.	Status Code	String	Status code	2	Optional	
18.	Status Description	String	Status description	100	Optional	

Trailer Record Format:

No	Field Name	Data Type	Description	Length	Required	Valid
1.	Record Type	String	To indicate Trailer	1	Required	T
2.	Total Detail Record	String	Total number of detail record	11	Required	
3.	Total Amount	String	Total amount of detail record	11	Required	
4.	Total Success	String	Total number of success record	11	Optional	
5.	Total Fail	String	Total number of fail record	11	Optional	
6.	Total Exception	String	Total number of exception record	11	Optional	

Note:

- All fields to be separated by comma “,”
- Only successfully PIN/E-Topup request to be included.



19 Response Code

Response Code	Description
00	APPROVE
01	SERVICE UNAVAILABLE, PLEASE TRY AGAIN
02	INVALID MOBILE NUMBER
03	MOBILE NOT PREPAID
04	MOBILE NOT ACTIVE
05	MOBILE IS BARRED
13	ACCOUNT LIMIT EXCEEDED
14	UNMATCHING TRANSACTION FROM TELCO
16	TRANSACTION AREADY REVERSED FROM TELCO
18	REVERSAL PERIOD EXCEEDED
20	ACCOUNT INSUFFICIENT CREDIT
21	TRANSACTION REJECTED
22	TRANSACTION DECLINED
23	TRANSACTION IN PROCESS
27	INVALID MAC
40	REJECTED, INVALID VALUE
43	REJECTED, VALUE BELOW MINIMUM
44	REJECTED, VALUE ABOVE MAXIMUM
45	REJECTED, VALUE NOT IN STEP
60	CONTACT TELCO CUSTOMER SERVICES
70	INVALID MESSAGE FORMAT
71	COMMUNICATION ERROR
72	RESPONSE TIMEOUT
73	REVERSAL THRESHOLD EXCEEDED
74	SSL AUTHENTICATION FAILED
79	INACTIVE ACCOUNT
80	INVALID TERMINAL
81	TERMINAL REFUSED
82	CREDIT LIMIT EXCEEDED
83	NO PRODUCT FOUND
84	FEATURE UNAVAILABLE
85	OUT OF STOCK
86	INVALID VALUE
87	DUPLICATE TXN REFERENCE
88	INVALID CARD NUMBER FORMAT
90	UNMATCHED TRANSACTION
93	REVERSAL ALREADY PROCESSED
94	REVERSAL PENDING
95	AMOUNT MISMATCH
99	TRANSACTION FAILED
RK	INVALID MAC

All rights reserved. This material is confidential and proprietary to e-pay (M) Sdn Bhd and no part of this material should be reproduced, published in any form by any means, electronic or mechanical including photocopy or any information storage or retrieval system nor should the material be disclosed to third parties without the written authorization of e-pay (M) Sdn Bhd.



STANDARD SPECIFICATION of e-pay WEB SERVICE

Response Code	Description
T1	LOGIN IS REQUIRED
T2	INVALID TNG CRYPTO
T5	INVALID TNG CARD
T6	INSUFFICIENT BALANCE



20 List of Operator ID

1. ATM (ATM service)
2. SMS (SMS service)
3. IBS (Internet Banking Service)
4. MBS (Mobile Banking Service)
4. OTR (Other services)



21 WSDL for e-pay Web Service

```
<?xml version="1.0" encoding="UTF-8"?>
<wsdl:definitions targetNamespace="urn:EPAYIBWS"
xmlns:apachesoap="http://xml.apache.org/xml-soap" xmlns:impl="urn:EPAYIBWS"
xmlns:intf="urn:EPAYIBWS" xmlns:tns1="http://schemas.xmlsoap.org/soap/encoding/"
xmlns:tns2="http://axis.apache.org" xmlns:wsdl="http://schemas.xmlsoap.org/wsdl/"
xmlns:wsdlssoap="http://schemas.xmlsoap.org/wsdl/soap/"
xmlns:xsd="http://www.w3.org/2001/XMLSchema">
  <wsdl:types>
    <schema elementFormDefault="qualified" targetNamespace="urn:EPAYIBWS"
xmlns="http://www.w3.org/2001/XMLSchema">

      <complexType name="RequestMsg">
        <sequence>
          <element name="amount" nillable="true" type="tns1:string"/>
          <element name="merchantId" nillable="true" type="tns1:string"/>
          <element name="operatorId" nillable="true" type="tns1:string"/>
          <element name="orgTransRef" nillable="true" type="tns1:string"/>
          <element name="retTransRef" nillable="true" type="tns1:string"/>
          <element name="terminalId" nillable="true" type="tns1:string"/>
          <element name="productCode" nillable="true" type="tns1:string"/>
          <element name="msisdn" nillable="true" type="tns1:string"/>
          <element name="transDateTime" nillable="true" type="tns1:string"/>
          <element name="transTracelId" type="xsd:int"/>
          <element name="customField1" nillable="true" type="tns1:string"/>
          <element name="customField2" nillable="true" type="tns1:string"/>
          <element name="customField3" nillable="true" type="tns1:string"/>
          <element name="customField4" nillable="true" type="tns1:string"/>
          <element name="customField5" nillable="true" type="tns1:string"/>
          <element name="macing" nillable="true" type="tns1:string"/>
        </sequence>
      </complexType>

      <complexType name="ResponseMsg">
        <sequence>
          <element name="amount" nillable="true" type="tns1:string"/>
          <element name="pin" nillable="true" type="tns1:string"/>
          <element name="pinExpiryDate" nillable="true" type="tns1:string"/>
          <element name="productCode" nillable="true" type="tns1:string"/>
          <element name="responseCode" nillable="true" type="tns1:string"/>
          <element name="responseMsg" nillable="true" type="tns1:string"/>
          <element name="retTransRef" nillable="true" type="tns1:string"/>
          <element name="terminalId" nillable="true" type="tns1:string"/>
          <element name="transRef" nillable="true" type="tns1:string"/>
          <element maxOccurs="1" minOccurs="0" name="customField1" nillable="true"
type="tns1:string"/>
          <element maxOccurs="1" minOccurs="0" name="customField2" nillable="true"
type="tns1:string"/>
          <element maxOccurs="1" minOccurs="0" name="customField3" nillable="true"
type="tns1:string"/>
          <element maxOccurs="1" minOccurs="0" name="customField4" nillable="true"
type="tns1:string"/>
          <element maxOccurs="1" minOccurs="0" name="customField5" nillable="true"
type="tns1:string"/>
        </sequence>
      </complexType>
    </schema>
  </wsdl:types>
</wsdl:definitions>
```

All rights reserved. This material is confidential and proprietary to e-pay (M) Sdn Bhd and no part of this material should be reproduced, published in any form by any means, electronic or mechanical including photocopy or any information storage or retrieval system nor should the material be disclosed to third parties without the written authorization of e-pay (M) Sdn Bhd.



```
<element maxOccurs="1" minOccurs="0" name="macing" nillable="true" type="tns:string"/>
</sequence>
</complexType>
<element name="fault" type="xsd:anyType"/>
<element name="onlinePIN">
  <complexType>
    <sequence>
      <element name="in0" type="impl:RequestMsg"/>
    </sequence>
  </complexType>
</element>
<element name="onlinePINResponse">
  <complexType>
    <sequence>
      <element name="onlinePINReturn" type="impl:ResponseMsg"/>
    </sequence>
  </complexType>
</element>
<element name="onlinePINReversal">
  <complexType>
    <sequence>
      <element name="in0" type="impl:RequestMsg"/>
    </sequence>
  </complexType>
</element>
<element name="onlinePINReversalResponse">
  <complexType>
    <sequence>
      <element name="onlinePINReversalReturn" type="impl:ResponseMsg"/>
    </sequence>
  </complexType>
</element>
<element name="onlinePINVoid">
  <complexType>
    <sequence>
      <element name="in0" type="impl:RequestMsg"/>
    </sequence>
  </complexType>
</element>
<element name="onlinePINVoidResponse">
  <complexType>
    <sequence>
      <element name="onlinePINVoidReturn" type="impl:ResponseMsg"/>
    </sequence>
  </complexType>
</element>
<element name="etopup">
  <complexType>
    <sequence>
      <element name="in0" type="impl:RequestMsg"/>
    </sequence>
  </complexType>
</element>
```




```
<element name="etopupResponse">
  <complexType>
    <sequence>
      <element name="etopupReturn" type="impl:ResponseMsg"/>
    </sequence>
  </complexType>
</element>
<element name="etopupReversal">
  <complexType>
    <sequence>
      <element name="in0" type="impl:RequestMsg"/>
    </sequence>
  </complexType>
</element>
<element name="etopupReversalResponse">
  <complexType>
    <sequence>
      <element name="etopupReversalReturn" type="impl:ResponseMsg"/>
    </sequence>
  </complexType>
</element>
<element name="etopupVoid">
  <complexType>
    <sequence>
      <element name="in0" type="impl:RequestMsg"/>
    </sequence>
  </complexType>
</element>
<element name="etopupVoidResponse">
  <complexType>
    <sequence>
      <element name="etopupVoidReturn" type="impl:ResponseMsg"/>
    </sequence>
  </complexType>
</element>
<element name="payment">
  <complexType>
    <sequence>
      <element name="in0" type="impl:RequestMsg"/>
    </sequence>
  </complexType>
</element>
<element name="paymentResponse">
  <complexType>
    <sequence>
      <element name="paymentReturn" type="impl:ResponseMsg"/>
    </sequence>
  </complexType>
</element>
<element name="paymentReversal">
  <complexType>
    <sequence>
      <element name="in0" type="impl:RequestMsg"/>
    </sequence>
  </complexType>
</element>
```



```
</sequence>
</complexType>
</element>
<element name="paymentReversalResponse">
  <complexType>
    <sequence>
      <element name="paymentReversalReturn" type="impl:ResponseMsg"/>
    </sequence>
  </complexType>
</element>
<element name="paymentVoid">
  <complexType>
    <sequence>
      <element name="in0" type="impl:RequestMsg"/>
    </sequence>
  </complexType>
</element>
<element name="paymentVoidResponse">
  <complexType>
    <sequence>
      <element name="paymentVoidReturn" type="impl:ResponseMsg"/>
    </sequence>
  </complexType>
</element>
<element name="networkCheck">
  <complexType>
    <sequence>
      <element name="in0" type="impl:RequestMsg"/>
    </sequence>
  </complexType>
</element>
<element name="networkCheckResponse">
  <complexType>
    <sequence>
      <element name="networkCheckReturn" type="impl:ResponseMsg"/>
    </sequence>
  </complexType>
</element>
<element name="upload">
  <complexType>
    <sequence>
      <element name="in0" type="impl:RequestMsg"/>
    </sequence>
  </complexType>
</element>
<element name="uploadResponse">
  <complexType>
    <sequence>
      <element name="uploadReturn" type="impl:ResponseMsg"/>
    </sequence>
  </complexType>
</element>
<element name="deviceInit">
```



```
<complexType>
  <sequence>
    <element name="in0" type="impl:DeviceRequestMsg"/>
  </sequence>
</complexType>
</element>
<complexType name="DeviceRequestMsg">
  <sequence>
    <element name="merchantId" type="tns1:string"/>
    <element name="terminalId" type="tns1:string"/>
    <element name="deviceInfo" nillable="true" type="tns1:string"/>
    <element name="deviceType" nillable="true" type="tns1:string"/>
    <element name="retTransRef" nillable="true" type="tns1:string"/>
    <element name="transDateTime" nillable="true" type="tns1:string"/>
    <element name="customField1" nillable="true" type="tns1:string"/>
    <element name="customField2" nillable="true" type="tns1:string"/>
    <element name="customField3" nillable="true" type="tns1:string"/>
    <element name="customField4" nillable="true" type="tns1:string"/>
    <element name="customField5" nillable="true" type="tns1:string"/>
    <element name="macing" nillable="true" type="tns1:string"/>
  </sequence>
</complexType>
<element name="deviceInitResponse">
  <complexType>
    <sequence>
      <element name="deviceInitReturn" type="impl:DeviceResponseMsg"/>
    </sequence>
  </complexType>
</element>
<complexType name="DeviceResponseMsg">
  <sequence>
    <element name="terminalId" type="tns1:string"/>
    <element name="responseCode" type="tns1:string"/>
    <element name="responseMsg" nillable="true" type="tns1:string"/>
    <element name="deviceData" nillable="true" type="tns1:string"/>
    <element name="retTransRef" nillable="true" type="tns1:string"/>
    <element name="transRef" nillable="true" type="tns1:string"/>
    <element maxOccurs="1" minOccurs="0" name="customField1" nillable="true"
type="tns1:string"/>
    <element maxOccurs="1" minOccurs="0" name="customField2" nillable="true"
type="tns1:string"/>
    <element maxOccurs="1" minOccurs="0" name="customField3" nillable="true"
type="tns1:string"/>
    <element maxOccurs="1" minOccurs="0" name="customField4" nillable="true"
type="tns1:string"/>
    <element maxOccurs="1" minOccurs="0" name="customField5" nillable="true"
type="tns1:string"/>
    <element maxOccurs="1" minOccurs="0" name="macing" nillable="true" type="tns1:string"/>
  </sequence>
</complexType>
<element name="deviceLogin">
  <complexType>
    <sequence>
```



```
<element name="in0" type="impl:DeviceRequestMsg"/>
</sequence>
</complexType>
</element>
<element name="deviceLoginResponse">
<complexType>
<sequence>
<element name="deviceLoginReturn" type="impl:DeviceResponseMsg"/>
</sequence>
</complexType>
</element>
<element name="deviceUpdate">
<complexType>
<sequence>
<element name="in0" type="impl:DeviceRequestMsg"/>
</sequence>
</complexType>
</element>
<element name="deviceUpdateResponse">
<complexType>
<sequence>
<element name="deviceUpdateReturn" type="impl:DeviceResponseMsg"/>
</sequence>
</complexType>
</element>
</schema>
</wsdl:types>

<wsdl:message name="etopupVoidResponse">
<wsdl:part element="impl:etopupVoidResponse" name="parameters"/>
</wsdl:message>

<wsdl:message name="etopupResponse">
<wsdl:part element="impl:etopupResponse" name="parameters"/>
</wsdl:message>

<wsdl:message name="networkCheckRequest">
<wsdl:part element="impl:networkCheck" name="parameters"/>
</wsdl:message>

<wsdl:message name="deviceUpdateResponse">
<wsdl:part element="impl:deviceUpdateResponse" name="parameters"/>
</wsdl:message>

<wsdl:message name="onlinePINReversalResponse">
```



```
<wsdl:part element="impl:onlinePINReversalResponse" name="parameters"/>
</wsdl:message>
<wsdl:message name="onlinePINReversalRequest">
  <wsdl:part element="impl:onlinePINReversal" name="parameters"/>
</wsdl:message>
<wsdl:message name="deviceInitResponse">
  <wsdl:part element="impl:deviceInitResponse" name="parameters"/>
</wsdl:message>
<wsdl:message name="onlinePINResponse">
  <wsdl:part element="impl:onlinePINResponse" name="parameters"/>
</wsdl:message>
<wsdl:message name="onlinePINRequest">
  <wsdl:part element="impl:onlinePIN" name="parameters"/>
</wsdl:message>
<wsdl:message name="deviceInitRequest">
  <wsdl:part element="impl:deviceInit" name="parameters"/>
</wsdl:message>
<wsdl:message name="paymentReversalRequest">
  <wsdl:part element="impl:paymentReversal" name="parameters"/>
</wsdl:message>
<wsdl:message name="etopupReversalResponse">
  <wsdl:part element="impl:etopupReversalResponse" name="parameters"/>
</wsdl:message>
<wsdl:message name="uploadRequest">
  <wsdl:part element="impl:upload" name="parameters"/>
</wsdl:message>
```



```
<wsdl:message name="paymentVoidResponse">
  <wsdl:part element="impl:paymentVoidResponse" name="parameters"/>
</wsdl:message>

<wsdl:message name="deviceUpdateRequest">
  <wsdl:part element="impl:deviceUpdate" name="parameters"/>
</wsdl:message>

<wsdl:message name="deviceLoginResponse">
  <wsdl:part element="impl:deviceLoginResponse" name="parameters"/>
</wsdl:message>

<wsdl:message name="etopupRequest">
  <wsdl:part element="impl:etopup" name="parameters"/>
</wsdl:message>

<wsdl:message name="networkCheckResponse">
  <wsdl:part element="impl:networkCheckResponse" name="parameters"/>
</wsdl:message>

<wsdl:message name="etopupReversalRequest">
  <wsdl:part element="impl:etopupReversal" name="parameters"/>
</wsdl:message>

<wsdl:message name="uploadResponse">
  <wsdl:part element="impl:uploadResponse" name="parameters"/>
</wsdl:message>

<wsdl:message name="deviceLoginRequest">
  <wsdl:part element="impl:deviceLogin" name="parameters"/>
</wsdl:message>

<wsdl:message name="paymentVoidRequest">
  <wsdl:part element="impl:paymentVoid" name="parameters"/>
</wsdl:message>
```



```
<wsdl:message name="paymentResponse">
  <wsdl:part element="impl:paymentResponse" name="parameters"/>
</wsdl:message>

<wsdl:message name="paymentRequest">
  <wsdl:part element="impl:payment" name="parameters"/>
</wsdl:message>

<wsdl:message name="etopupVoidRequest">
  <wsdl:part element="impl:etopupVoid" name="parameters"/>
</wsdl:message>

<wsdl:message name="ConfigurationException">
  <wsdl:part element="impl:fault" name="fault"/>
</wsdl:message>

<wsdl:message name="onlinePINVoidRequest">
  <wsdl:part element="impl:onlinePINVoid" name="parameters"/>
</wsdl:message>

<wsdl:message name="paymentReversalResponse">
  <wsdl:part element="impl:paymentReversalResponse" name="parameters"/>
</wsdl:message>

<wsdl:message name="onlinePINVoidResponse">
  <wsdl:part element="impl:onlinePINVoidResponse" name="parameters"/>
</wsdl:message>

<wsdl:portType name="oglws">
  <wsdl:operation name="onlinePIN">
    <wsdl:input message="impl:onlinePINRequest" name="onlinePINRequest"/>
    <wsdl:output message="impl:onlinePINResponse" name="onlinePINResponse"/>
    <wsdl:fault message="impl:ConfigurationException" name="ConfigurationException"/>
  </wsdl:operation>
</wsdl:portType>
```



```
</wsdl:operation>

<wsdl:operation name="onlinePINReversal">
  <wsdl:input message="impl:onlinePINReversalRequest"
name="onlinePINReversalRequest"/>

  <wsdl:output message="impl:onlinePINReversalResponse"
name="onlinePINReversalResponse"/>

  <wsdl:fault message="impl:ConfigurationException" name="ConfigurationException"/>
</wsdl:operation>

<wsdl:operation name="onlinePINVoid">
  <wsdl:input message="impl:onlinePINVoidRequest" name="onlinePINVoidRequest"/>
  <wsdl:output message="impl:onlinePINVoidResponse" name="onlinePINVoidResponse"/>
  <wsdl:fault message="impl:ConfigurationException" name="ConfigurationException"/>
</wsdl:operation>

<wsdl:operation name="etopup">
  <wsdl:input message="impl:etopupRequest" name="etopupRequest"/>
  <wsdl:output message="impl:etopupResponse" name="etopupResponse"/>
  <wsdl:fault message="impl:ConfigurationException" name="ConfigurationException"/>
</wsdl:operation>

<wsdl:operation name="etopupReversal">
  <wsdl:input message="impl:etopupReversalRequest" name="etopupReversalRequest"/>
  <wsdl:output message="impl:etopupReversalResponse"
name="etopupReversalResponse"/>
  <wsdl:fault message="impl:ConfigurationException" name="ConfigurationException"/>
</wsdl:operation>

<wsdl:operation name="etopupVoid">
  <wsdl:input message="impl:etopupVoidRequest" name="etopupVoidRequest"/>
  <wsdl:output message="impl:etopupVoidResponse" name="etopupVoidResponse"/>
  <wsdl:fault message="impl:ConfigurationException" name="ConfigurationException"/>
</wsdl:operation>
```




```
</wsdl:operation>

<wsdl:operation name="payment">
  <wsdl:input message="impl:paymentRequest" name="paymentRequest"/>
  <wsdl:output message="impl:paymentResponse" name="paymentResponse"/>
  <wsdl:fault message="impl:ConfigurationException" name="ConfigurationException"/>
</wsdl:operation>

<wsdl:operation name="paymentReversal">
  <wsdl:input message="impl:paymentReversalRequest"
name="paymentReversalRequest"/>
  <wsdl:output message="impl:paymentReversalResponse"
name="paymentReversalResponse"/>
  <wsdl:fault message="impl:ConfigurationException" name="ConfigurationException"/>
</wsdl:operation>

<wsdl:operation name="paymentVoid">
  <wsdl:input message="impl:paymentVoidRequest" name="paymentVoidRequest"/>
  <wsdl:output message="impl:paymentVoidResponse" name="paymentVoidResponse"/>
  <wsdl:fault message="impl:ConfigurationException" name="ConfigurationException"/>
</wsdl:operation>

<wsdl:operation name="networkCheck">
  <wsdl:input message="impl:networkCheckRequest" name="networkCheckRequest"/>
  <wsdl:output message="impl:networkCheckResponse" name="networkCheckResponse"/>
  <wsdl:fault message="impl:ConfigurationException" name="ConfigurationException"/>
</wsdl:operation>

<wsdl:operation name="upload">
  <wsdl:input message="impl:uploadRequest" name="uploadRequest"/>
  <wsdl:output message="impl:uploadResponse" name="uploadResponse"/>
  <wsdl:fault message="impl:ConfigurationException" name="ConfigurationException"/>
</wsdl:operation>
```



```
<wsdl:operation name="deviceInit">
  <wsdl:input message="impl:deviceInitRequest" name="deviceInitRequest"/>
  <wsdl:output message="impl:deviceInitResponse" name="deviceInitResponse"/>
  <wsdl:fault message="impl:ConfigurationException" name="ConfigurationException"/>
</wsdl:operation>
<wsdl:operation name="deviceLogin">
  <wsdl:input message="impl:deviceLoginRequest" name="deviceLoginRequest"/>
  <wsdl:output message="impl:deviceLoginResponse" name="deviceLoginResponse"/>
  <wsdl:fault message="impl:ConfigurationException" name="ConfigurationException"/>
</wsdl:operation>
<wsdl:operation name="deviceUpdate">
  <wsdl:input message="impl:deviceUpdateRequest" name="deviceUpdateRequest"/>
  <wsdl:output message="impl:deviceUpdateResponse" name="deviceUpdateResponse"/>
  <wsdl:fault message="impl:ConfigurationException" name="ConfigurationException"/>
</wsdl:operation>
</wsdl:portType>
<wsdl:binding name="oglwsSoapBinding" type="impl:oglws">
  <wsdlsoap:binding style="document" transport="http://schemas.xmlsoap.org/soap/http"/>
  <wsdl:operation name="onlinePIN">
    <wsdlsoap:operation soapAction=""/>
    <wsdl:input name="onlinePINRequest">
      <wsdlsoap:body use="literal"/>
    </wsdl:input>
    <wsdl:output name="onlinePINResponse">
      <wsdlsoap:body use="literal"/>
    </wsdl:output>
```



```
<wsdl:fault name="ConfigurationException">
  <wsdlsoap:fault name="ConfigurationException" use="literal"/>
</wsdl:fault>
</wsdl:operation>
<wsdl:operation name="onlinePINReversal">
  <wsdlsoap:operation soapAction=""/>
  <wsdl:input name="onlinePINReversalRequest">
    <wsdlsoap:body use="literal"/>
  </wsdl:input>
  <wsdl:output name="onlinePINReversalResponse">
    <wsdlsoap:body use="literal"/>
  </wsdl:output>
  <wsdl:fault name="ConfigurationException">
    <wsdlsoap:fault name="ConfigurationException" use="literal"/>
  </wsdl:fault>
</wsdl:operation>
<wsdl:operation name="onlinePINVoid">
  <wsdlsoap:operation soapAction=""/>
  <wsdl:input name="onlinePINVoidRequest">
    <wsdlsoap:body use="literal"/>
  </wsdl:input>
  <wsdl:output name="onlinePINVoidResponse">
    <wsdlsoap:body use="literal"/>
  </wsdl:output>
  <wsdl:fault name="ConfigurationException">
    <wsdlsoap:fault name="ConfigurationException" use="literal"/>
  </wsdl:fault>
```



```
</wsdl:operation>
<wsdl:operation name="etopup">
  <wsdlsoap:operation soapAction=""/>
  <wsdl:input name="etopupRequest">
    <wsdlsoap:body use="literal"/>
  </wsdl:input>
  <wsdl:output name="etopupResponse">
    <wsdlsoap:body use="literal"/>
  </wsdl:output>
  <wsdl:fault name="ConfigurationException">
    <wsdlsoap:fault name="ConfigurationException" use="literal"/>
  </wsdl:fault>
</wsdl:operation>
<wsdl:operation name="etopupReversal">
  <wsdlsoap:operation soapAction=""/>
  <wsdl:input name="etopupReversalRequest">
    <wsdlsoap:body use="literal"/>
  </wsdl:input>
  <wsdl:output name="etopupReversalResponse">
    <wsdlsoap:body use="literal"/>
  </wsdl:output>
  <wsdl:fault name="ConfigurationException">
    <wsdlsoap:fault name="ConfigurationException" use="literal"/>
  </wsdl:fault>
</wsdl:operation>
<wsdl:operation name="etopupVoid">
```



```
<wsdlsoap:operation soapAction=""/>
<wsdl:input name="etopupVoidRequest">
  <wsdlsoap:body use="literal"/>
</wsdl:input>
<wsdl:output name="etopupVoidResponse">
  <wsdlsoap:body use="literal"/>
</wsdl:output>
<wsdl:fault name="ConfigurationException">
  <wsdlsoap:fault name="ConfigurationException" use="literal"/>
</wsdl:fault>
</wsdl:operation>
<wsdl:operation name="payment">
  <wsdlsoap:operation soapAction=""/>
  <wsdl:input name="paymentRequest">
    <wsdlsoap:body use="literal"/>
  </wsdl:input>
  <wsdl:output name="paymentResponse">
    <wsdlsoap:body use="literal"/>
  </wsdl:output>
  <wsdl:fault name="ConfigurationException">
    <wsdlsoap:fault name="ConfigurationException" use="literal"/>
  </wsdl:fault>
</wsdl:operation>
<wsdl:operation name="paymentReversal">
  <wsdlsoap:operation soapAction=""/>
  <wsdl:input name="paymentReversalRequest">
    <wsdlsoap:body use="literal"/>
```



```
</wsdl:input>
<wsdl:output name="paymentReversalResponse">
  <wsdlsoap:body use="literal"/>
</wsdl:output>
<wsdl:fault name="ConfigurationException">
  <wsdlsoap:fault name="ConfigurationException" use="literal"/>
</wsdl:fault>
</wsdl:operation>
<wsdl:operation name="paymentVoid">
  <wsdlsoap:operation soapAction=""/>
  <wsdl:input name="paymentVoidRequest">
    <wsdlsoap:body use="literal"/>
  </wsdl:input>
  <wsdl:output name="paymentVoidResponse">
    <wsdlsoap:body use="literal"/>
  </wsdl:output>
  <wsdl:fault name="ConfigurationException">
    <wsdlsoap:fault name="ConfigurationException" use="literal"/>
  </wsdl:fault>
</wsdl:operation>
<wsdl:operation name="networkCheck">
  <wsdlsoap:operation soapAction=""/>
  <wsdl:input name="networkCheckRequest">
    <wsdlsoap:body use="literal"/>
  </wsdl:input>
  <wsdl:output name="networkCheckResponse">
```



```
<wsdlsoap:body use="literal"/>
</wsdl:output>
<wsdl:fault name="ConfigurationException">
  <wsdlsoap:fault name="ConfigurationException" use="literal"/>
</wsdl:fault>
</wsdl:operation>
<wsdl:operation name="upload">
  <wsdlsoap:operation soapAction=""/>
  <wsdl:input name="uploadRequest">
    <wsdlsoap:body use="literal"/>
  </wsdl:input>
  <wsdl:output name="uploadResponse">
    <wsdlsoap:body use="literal"/>
  </wsdl:output>
  <wsdl:fault name="ConfigurationException">
    <wsdlsoap:fault name="ConfigurationException" use="literal"/>
  </wsdl:fault>
</wsdl:operation>
<wsdl:operation name="deviceInit">
  <wsdlsoap:operation soapAction=""/>
  <wsdl:input name="deviceInitRequest">
    <wsdlsoap:body use="literal"/>
  </wsdl:input>
  <wsdl:output name="deviceInitResponse">
    <wsdlsoap:body use="literal"/>
  </wsdl:output>
  <wsdl:fault name="ConfigurationException">
```



```
<wsdlsoap:fault name="ConfigurationException" use="literal"/>
</wsdl:fault>
</wsdl:operation>
<wsdl:operation name="deviceLogin">
  <wsdlsoap:operation soapAction=""/>
  <wsdl:input name="deviceLoginRequest">
    <wsdlsoap:body use="literal"/>
  </wsdl:input>
  <wsdl:output name="deviceLoginResponse">
    <wsdlsoap:body use="literal"/>
  </wsdl:output>
  <wsdl:fault name="ConfigurationException">
    <wsdlsoap:fault name="ConfigurationException" use="literal"/>
  </wsdl:fault>
</wsdl:operation>
<wsdl:operation name="deviceUpdate">
  <wsdlsoap:operation soapAction=""/>
  <wsdl:input name="deviceUpdateRequest">
    <wsdlsoap:body use="literal"/>
  </wsdl:input>
  <wsdl:output name="deviceUpdateResponse">
    <wsdlsoap:body use="literal"/>
  </wsdl:output>
  <wsdl:fault name="ConfigurationException">
    <wsdlsoap:fault name="ConfigurationException" use="literal"/>
  </wsdl:fault>
</wsdl:operation>
```




STANDARD SPECIFICATION of e-pay WEB SERVICE

```
</wsdl:operation>  
</wsdl:binding>  
<wsdl:service name="OglWsService">  
  <wsdl:port binding="impl:oglwsSoapBinding" name="oglws">  
    <wsdlsoap:address location="https://ws1.oriongateway.com:22837/willani/services/oglws"/>  
  </wsdl:port>  
</wsdl:service>  
</wsdl:definitions>
```



22 Sample Message

Product: DIGI**Request Message:**

```
<?xml version="1.0" encoding="UTF-8"?>
<soapenv:Envelope xmlns:soapenv="http://schemas.xmlsoap.org/soap/envelope/"
xmlns:xsd="http://www.w3.org/2001/XMLSchema" xmlns:xsi="http://www.w3.org/2001/XMLSchema-instance">
  <soapenv:Body>
    <ns1:onlinePIN soapenv:encodingStyle="http://schemas.xmlsoap.org/soap/encoding/" xmlns:ns1="urn:EPAYIBWS">
      <in0 xsi:type="ns2:RequestMsg" xmlns:ns2="urn:oglws">
        <amount>1000</amount>
        <merchantId>599999</merchantId>
        <operatorId>IBS</operatorId>
        <orgTransRef xsi:nil="true"/>
        <refTransRef>100707Test1</refTransRef>
        <terminalId>80000649</terminalId>
        <productCode>DIGI</productCode>
        <msisdn xsi:nil="true"/>
        <transDateTime>100707182212</transDateTime>
        <transTraceId>0</transTraceId>
        <customField1 xsi:nil="true"/>
        <customField2 xsi:nil="true"/>
        <customField3 xsi:nil="true"/>
        <customField4 xsi:nil="true"/>
        <customField5 xsi:nil="true"/>
      </in0>
    </ns1:onlinePIN>
  </soapenv:Body>
</soapenv:Envelope>
```

Success Reponse Message:

```
<?xml version="1.0" encoding="UTF-8"?>
<soapenv:Envelope xmlns:soapenv="http://schemas.xmlsoap.org/soap/envelope/"
xmlns:xsd="http://www.w3.org/2001/XMLSchema" xmlns:xsi="http://www.w3.org/2001/XMLSchema-instance">
  <soapenv:Body>
    <onlinePINResponse xmlns="urn:EPAYIBWS">
      <onlinePINReturn>
        <amount xsi:type="xsd:string">1000</amount>
        <pin xsi:type="xsd:string">706886118</pin>
        <pinExpiryDate xsi:type="xsd:string">071018</pinExpiryDate>
        <productCode xsi:type="xsd:string">DIGI</productCode>
        <responseCode xsi:type="xsd:string">00</responseCode>
        <responseMsg xsi:type="xsd:string"/>
        <refTransRef xsi:type="xsd:string">100707Test1</refTransRef>
        <terminalId xsi:type="xsd:string">80000649</terminalId>
        <transRef xsi:type="xsd:string">0001460800044593</transRef>
      </onlinePINReturn>
    </onlinePINResponse>
  </soapenv:Body>
</soapenv:Envelope>
```

Product: DIGI**Request Message:**

```
<?xml version="1.0" encoding="UTF-8"?>
<soapenv:Envelope xmlns:soapenv="http://schemas.xmlsoap.org/soap/envelope/"
xmlns:xsd="http://www.w3.org/2001/XMLSchema" xmlns:xsi="http://www.w3.org/2001/XMLSchema-instance">
  <soapenv:Body>
    <ns1:onlinePIN soapenv:encodingStyle="http://schemas.xmlsoap.org/soap/encoding/" xmlns:ns1="urn:EPAYIBWS">
      <in0 xsi:type="ns2:RequestMsg" xmlns:ns2="urn:oglws">
        <amount>1200</amount>
        <merchantId>599999</merchantId>
        <operatorId>IBS</operatorId>
        <orgTransRef xsi:nil="true"/>
        <refTransRef>100707Test2</refTransRef>
        <terminalId>80000649</terminalId>
        <productCode>DIGI</productCode>
        <msisdn xsi:nil="true"/>
      </in0>
    </ns1:onlinePIN>
  </soapenv:Body>
</soapenv:Envelope>
```



<pre><transDateTime>100707183031</transDateTime> <transTraceId>0</transTraceId> <customField1 xsi:nil="true"/> <customField2 xsi:nil="true"/> <customField3 xsi:nil="true"/> <customField4 xsi:nil="true"/> <customField5 xsi:nil="true"/> </in0> </ns1:onlinePIN> </soapenv:Body> </soapenv:Envelope></pre> <p>Fail Reponse Message:</p> <pre><?xml version="1.0" encoding="UTF-8"?> <soapenv:Envelope xmlns:soapenv="http://schemas.xmlsoap.org/soap/envelope/" xmlns:xsd="http://www.w3.org/2001/XMLSchema" xmlns:xsi="http://www.w3.org/2001/XMLSchema-instance"> <soapenv:Body> <onlinePINResponse xmlns="urn:EPAYIBWS"> <onlinePINReturn> <amount xsi:type="xsd:string">1200</amount> <pin xsi:nil="true"/> <pinExpiryDate xsi:nil="true"/> <productCode xsi:type="xsd:string">DIGI</productCode> <responseCode xsi:type="xsd:string">83</responseCode> <responseMsg xsi:type="xsd:string">NO PRODUCT FOUND</responseMsg> <retTransRef xsi:type="xsd:string">100707Test2</retTransRef> <terminalId xsi:type="xsd:string">80000649</terminalId> <transRef xsi:nil="true"/> </onlinePINReturn> </onlinePINResponse> </soapenv:Body> </soapenv:Envelope></pre>
<p>Product: ITALKMOBILE</p> <p>Request Message:</p> <pre><?xml version="1.0" encoding="UTF-8"?> <soapenv:Envelope xmlns:soapenv="http://schemas.xmlsoap.org/soap/envelope/" xmlns:xsd="http://www.w3.org/2001/XMLSchema" xmlns:xsi="http://www.w3.org/2001/XMLSchema-instance"> <soapenv:Body> <ns1:onlinePIN soapenv:encodingStyle="http://schemas.xmlsoap.org/soap/encoding/" xmlns:ns1="urn:EPAYIBWS"> <in0 xsi:type="ns2:RequestMsg" xmlns:ns2="urn:ogtws"> <amount>1000</amount> <merchantId>599999</merchantId> <operatorId>IBS</operatorId> <orgTransRef xsi:nil="true"/> <retTransRef>100707Test1</retTransRef> <terminalId>80000649</terminalId> <productCode>ITALKMOBILE</productCode> <msisdn xsi:nil="true"/> <transDateTime>100707190057</transDateTime> <transTraceId>0</transTraceId> <customField1>Custom1</customField1> <customField2>Custom2</customField2> <customField3 xsi:nil="true"/> <customField4 xsi:nil="true"/> <customField5 xsi:nil="true"/> </in0> </ns1:onlinePIN> </soapenv:Body> </soapenv:Envelope></pre> <p>Success Response Message:</p> <pre><?xml version="1.0" encoding="UTF-8"?> <soapenv:Envelope xmlns:soapenv="http://schemas.xmlsoap.org/soap/envelope/" xmlns:xsd="http://www.w3.org/2001/XMLSchema" xmlns:xsi="http://www.w3.org/2001/XMLSchema-instance"> <soapenv:Body></pre>



```
<onlinePINResponse xmlns="urn:EPAYIBWS">
  <onlinePINReturn>
    <amount xsi:type="xsd:string">1000</amount>
    <pin xsi:type="xsd:string">269810195</pin>
    <pinExpiryDate xsi:type="xsd:string">080630</pinExpiryDate>
    <productCode xsi:type="xsd:string">ITALKMOBILE</productCode>
    <responseCode xsi:type="xsd:string">00</responseCode>
    <responseMsg xsi:type="xsd:string"/>
    <refTransRef xsi:type="xsd:string">100707Test11</refTransRef>
    <terminalId xsi:type="xsd:string">80000649</terminalId>
    <transRef xsi:type="xsd:string">0101091087</transRef>
    <customField1 xsi:type="xsd:string">Custom1_R</customField1>
    <customField2 xsi:type="xsd:string">Custom2_R</customField2>
  </onlinePINReturn>
</onlinePINResponse>
</soapenv:Body>
</soapenv:Envelope>
```

Product: ITALKMOBILE**Request Message:**

```
<?xml version="1.0" encoding="UTF-8"?>
<soapenv:Envelope xmlns:soapenv="http://schemas.xmlsoap.org/soap/envelope/"
xmlns:xsd="http://www.w3.org/2001/XMLSchema" xmlns:xsi="http://www.w3.org/2001/XMLSchema-instance">
  <soapenv:Body>
    <ns1:onlinePIN soapenv:encodingStyle="http://schemas.xmlsoap.org/soap/encoding/" xmlns:ns1="urn:EPAYIBWS">
      <in0 xsi:type="ns2:RequestMsg" xmlns:ns2="urn:oglws">
        <amount>1000</amount>
        <merchantId>599999</merchantId>
        <operatorId>IBS</operatorId>
        <orgTransRef xsi:nil="true"/>
        <refTransRef>100707Test4</refTransRef>
        <terminalId>80000649</terminalId>
        <productCode>ITALKMOBILE</productCode>
        <msisdn xsi:nil="true"/>
        <transDateTime>100707183347</transDateTime>
        <transTraceId>0</transTraceId>
        <customField1 xsi:nil="true"/>
        <customField2 xsi:nil="true"/>
        <customField3 xsi:nil="true"/>
        <customField4 xsi:nil="true"/>
        <customField5 xsi:nil="true"/>
      </in0>
    </ns1:onlinePIN>
  </soapenv:Body>
</soapenv:Envelope>
```

Fail Response Message:

```
<?xml version="1.0" encoding="UTF-8"?>
<soapenv:Envelope xmlns:soapenv="http://schemas.xmlsoap.org/soap/envelope/"
xmlns:xsd="http://www.w3.org/2001/XMLSchema" xmlns:xsi="http://www.w3.org/2001/XMLSchema-instance">
  <soapenv:Body>
    <onlinePINResponse xmlns="urn:EPAYIBWS">
      <onlinePINReturn>
        <amount xsi:type="xsd:string">1000</amount>
        <pin xsi:nil="true"/>
        <pinExpiryDate xsi:nil="true"/>
        <productCode xsi:type="xsd:string">ITALKMOBILE</productCode>
        <responseCode xsi:type="xsd:string">99</responseCode>
        <responseMsg xsi:type="xsd:string">TRANSACTION FAILED</responseMsg>
        <refTransRef xsi:type="xsd:string">100707Test4</refTransRef>
        <terminalId xsi:type="xsd:string">80000649</terminalId>
        <transRef xsi:nil="true"/>
      </onlinePINReturn>
    </onlinePINResponse>
  </soapenv:Body>
</soapenv:Envelope>
```

**Product: ASTRO****Request Message:**

```
<?xml version="1.0" encoding="UTF-8"?>
<soapenv:Envelope xmlns:soapenv="http://schemas.xmlsoap.org/soap/envelope/"
xmlns:xsd="http://www.w3.org/2001/XMLSchema" xmlns:xsi="http://www.w3.org/2001/XMLSchema-instance">
  <soapenv:Body>
    <ns1:etopup soapenv:encodingStyle="http://schemas.xmlsoap.org/soap/encoding/" xmlns:ns1="urn:EPAYIBWS">
      <in0 xsi:type="ns2:RequestMsg" xmlns:ns2="urn:oglws">
        <amount>1800</amount>
        <merchantId>599999</merchantId>
        <operatorId>IBS</operatorId>
        <orgTransRef xsi:nil="true"/>
        <refTransRef>100707Test8</refTransRef>
        <terminalId>80000649</terminalId>
        <productCode>ASTRO</productCode>
        <msisdn>0812345678</msisdn>
        <transDateTime>100707184031</transDateTime>
        <transTraceId>0</transTraceId>
        <customField1 xsi:nil="true"/>
        <customField2 xsi:nil="true"/>
        <customField3 xsi:nil="true"/>
        <customField4 xsi:nil="true"/>
        <customField5 xsi:nil="true"/>
      </in0>
    </ns1:etopup>
  </soapenv:Body>
</soapenv:Envelope>
```

Success Response Message:

```
<?xml version="1.0" encoding="UTF-8"?>
<soapenv:Envelope xmlns:soapenv="http://schemas.xmlsoap.org/soap/envelope/"
xmlns:xsd="http://www.w3.org/2001/XMLSchema" xmlns:xsi="http://www.w3.org/2001/XMLSchema-instance">
  <soapenv:Body>
    <etopupResponse xmlns="urn:EPAYIBWS">
      <etopupReturn>
        <amount xsi:type="xsd:string">1800</amount>
        <pin xsi:nil="true"/><pinExpiryDate xsi:nil="true"/>
        <productCode xsi:type="xsd:string">ASTRO</productCode>
        <responseCode xsi:type="xsd:string">00</responseCode>
        <responseMsg xsi:type="xsd:string"/>
        <retTransRef xsi:type="xsd:string">100707Test8</retTransRef>
        <terminalId xsi:type="xsd:string">80000649</terminalId>
        <transRef xsi:type="xsd:string">EPAST0000443</transRef>
      </etopupReturn>
    </etopupResponse>
  </soapenv:Body>
</soapenv:Envelope>
```

Product: ASTRO**Request Message:**

```
<?xml version="1.0" encoding="UTF-8"?>
<soapenv:Envelope xmlns:soapenv="http://schemas.xmlsoap.org/soap/envelope/"
xmlns:xsd="http://www.w3.org/2001/XMLSchema" xmlns:xsi="http://www.w3.org/2001/XMLSchema-instance">
  <soapenv:Body>
    <ns1:etopup soapenv:encodingStyle="http://schemas.xmlsoap.org/soap/encoding/" xmlns:ns1="urn:EPAYIBWS">
      <in0 xsi:type="ns2:RequestMsg" xmlns:ns2="urn:oglws">
        <amount>1800</amount>
        <merchantId>599999</merchantId>
        <operatorId>IBS</operatorId>
        <orgTransRef xsi:nil="true"/>
        <refTransRef>100707Test9</refTransRef>
        <terminalId>80000649</terminalId>
        <productCode>ASTRO</productCode>
        <msisdn>0712345678</msisdn>
        <transDateTime>100707184128</transDateTime>
        <transTraceId>0</transTraceId>
      </in0>
    </ns1:etopup>
  </soapenv:Body>
</soapenv:Envelope>
```



```
<customField1 xsi:nil="true"/>
<customField2 xsi:nil="true"/>
<customField3 xsi:nil="true"/>
<customField4 xsi:nil="true"/>
<customField5 xsi:nil="true"/>
</in0>
</ns1:etopup>
</soapenv:Body>
</soapenv:Envelope>

Fail Response Message:
<?xml version="1.0" encoding="UTF-8"?>
<soapenv:Envelope xmlns:soapenv="http://schemas.xmlsoap.org/soap/envelope/"
xmlns:xsd="http://www.w3.org/2001/XMLSchema" xmlns:xsi="http://www.w3.org/2001/XMLSchema-instance">
  <soapenv:Body>
    <etopupResponse xmlns="urn:EPAYIBWS">
      <etopupReturn xmlns>
        <amount xsi:type="xsd:string">1800</amount>
        <pin xsi:nil="true"/><pinExpiryDate xsi:nil="true"/>
        <productCode xsi:type="xsd:string">ASTRO</productCode>
        <responseCode xsi:type="xsd:string">83</responseCode>
        <responseMsg xsi:type="xsd:string">NO PRODUCT FOUND</responseMsg>
        <retTransRef xsi:type="xsd:string">100707Test9</retTransRef>
        <terminalId xsi:type="xsd:string">80000649</terminalId>
        <transRef xsi:type="xsd:string"/>
      </etopupReturn>
    </etopupResponse>
  </soapenv:Body>
</soapenv:Envelope>
```



23 Testing Settings for e-pay Web Service

WSDL for e-pay Web Service:

<http://ws1.oriongateway.com:22835/willani/services/oglws?wsdl>

Testing URLs

URL with no SSL : <http://ws1.oriongateway.com:22835/willani/services/oglws>

URL with 1 way SSL : <https://ws1.oriongateway.com:22836/willani/services/oglws>

URL with 2 ways SSL: <https://ws1.oriongateway.com:22837/willani/services/oglws>

Testing ID

Merchant ID : 912371

Terminal ID : 16561011

Testing Certificate

Client Testing Certificate with Private Key: willaniclienttest.p12 (Password: willanitest)

Client Testing Certificate with Public Key : willaniepaytest.cer

e-pay Testing Certificate with Public Key: averni.cer

Testing Product

Product Code	Denomination	Title	Product Type	
PREPAID MOBILE - MALAYSIA				
CELCOMAIRTIME	10.000	Celcom Airtime 10	PIN	ETU
CELCOMAIRTIME	30.000	Celcom Airtime 30	PIN	ETU
CELCOMAIRTIME	50.000	Celcom Airtime 50	PIN	ETU
CELCOMAIRTIME	100.000	Celcom Airtime 100	PIN	ETU
CELCOMAIRTIME	200.000	Celcom Airtime 200	PIN	ETU
EASYRECHARGE	5.000 - 49.000	Easy Recharge 5-49		ETU
DIGI	10.000	Digi 10	PIN	
DIGI	30.000	Digi 30	PIN	
DIGI	50.000	Digi 50	PIN	
DIGI	100.000	Digi 100	PIN	
MAXISHOTLINK	10.000	Maxis Hotlink 10	PIN	
MAXISHOTLINK	20.000	Maxis Hotlink 20	PIN	
MAXISHOTLINK	30.000	Maxis Hotlink 30	PIN	
MAXISHOTLINK	60.000	Maxis Hotlink 60	PIN	
MAXISHOTLINK	100.000	Maxis Hotlink 100	PIN	
IDD & STD				
ITALKMOBILE	10.000	iTalk Mobile 10	PIN	
ITALKMOBILE	30.000	iTalk Mobile 30	PIN	
ITALKMOBILE	50.000	iTalk Mobile 50	PIN	
OTHERS				
ASTRO	0.000 – 500.000	Astro Bill Payment		ETU
CELCOMBILL	0.000 – 500.000	Celcom Bill Payment		ETU

All rights reserved. This material is confidential and proprietary to e-pay (M) Sdn Bhd and no part of this material should be reproduced, published in any form by any means, electronic or mechanical including photocopy or any information storage or retrieval system nor should the material be disclosed to third parties without the written authorization of e-pay (M) Sdn Bhd.



STANDARD SPECIFICATION of e-pay WEB SERVICE

Testing FTP Site for Recon File Upload

FTP Site: <ftp.e-pay-asia.com>

Port: 21

Username: ftgen@e-pay-asia.com

Password: ftgen5876